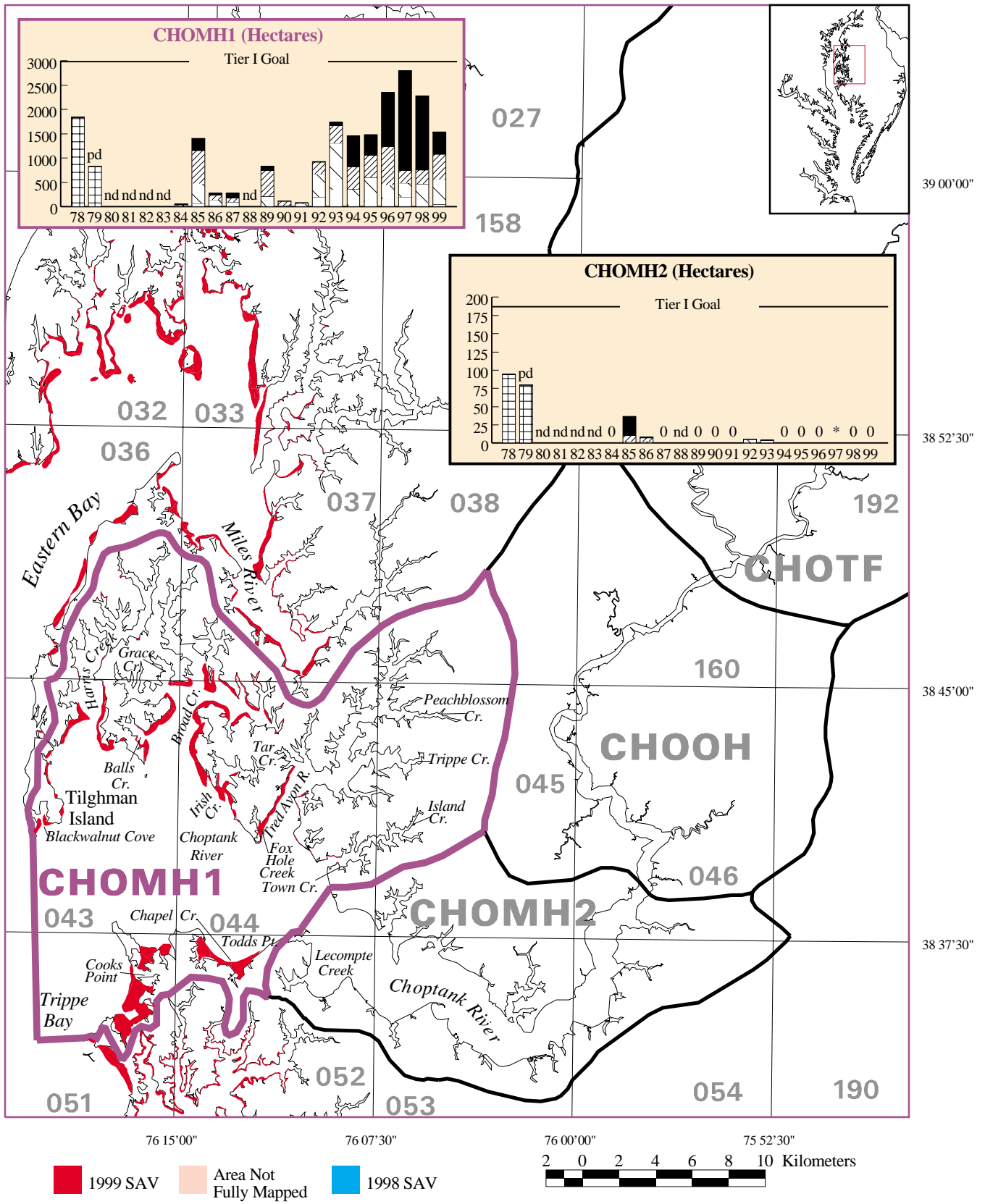
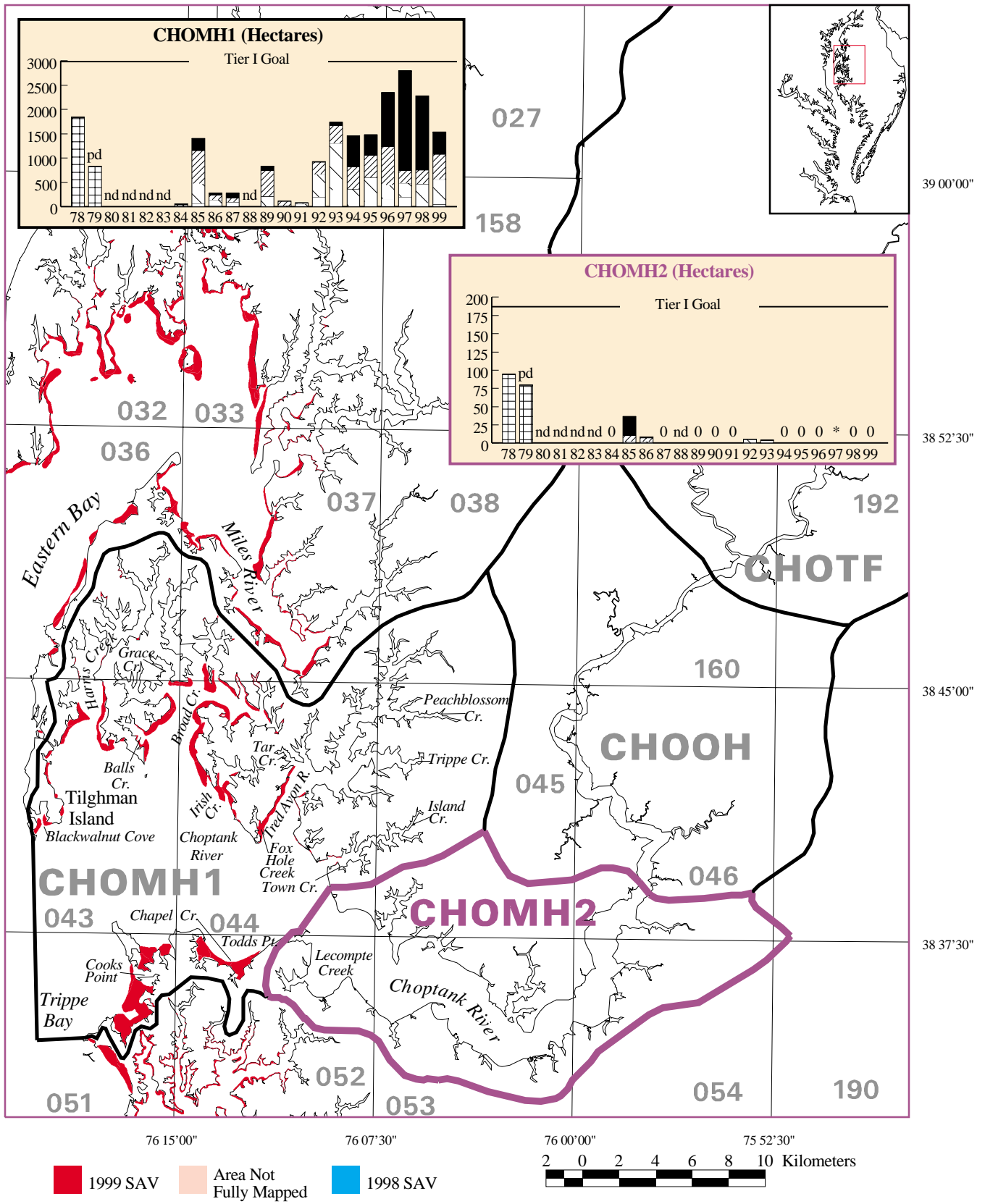


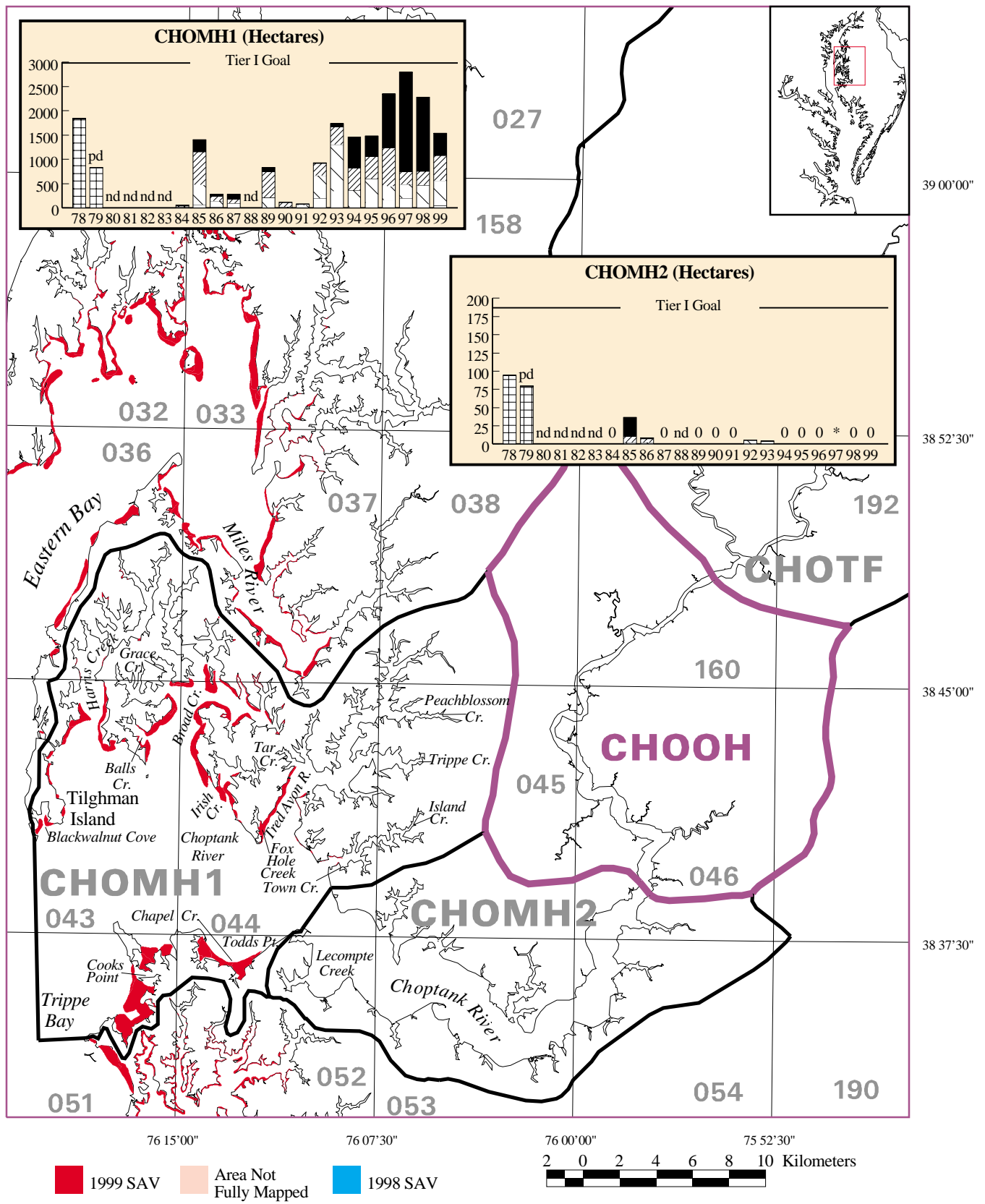
SAV distribution in the Middle Central Chesapeake Bay (CB4MH) and Eastern Bay (EASMH) in 1999. (See Figure 11 for key.)



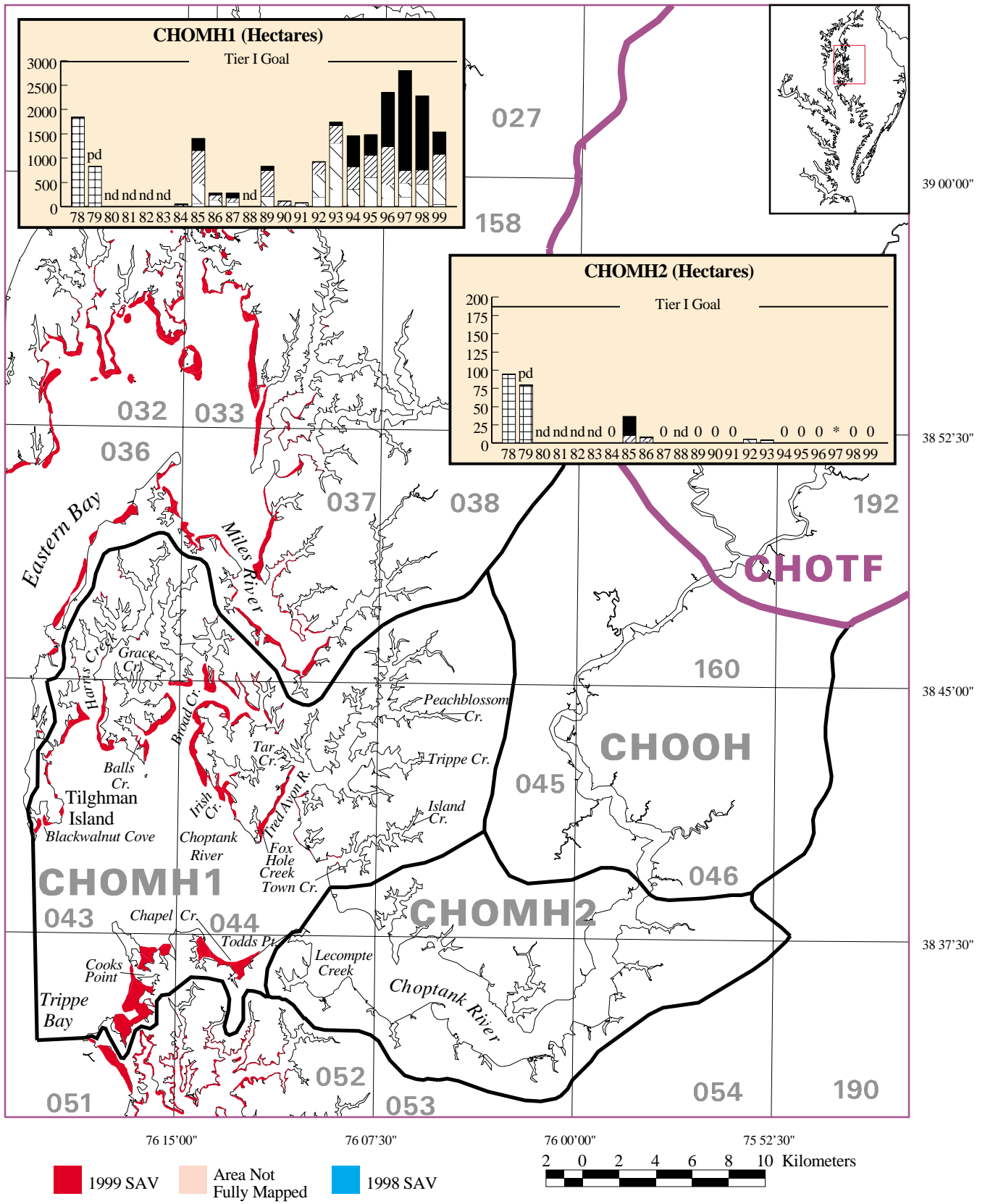
SAV distribution in the Mouth of the Choptank River (CHOMH1), the Lower (CHOMH2), the Middle (CHOOH), and the Upper (CHOTF) Choptank River in 1999. CHOOH and CHOTF are not graphed as no SAV was mapped from 1971-1999. (See Figure 11 for key.)



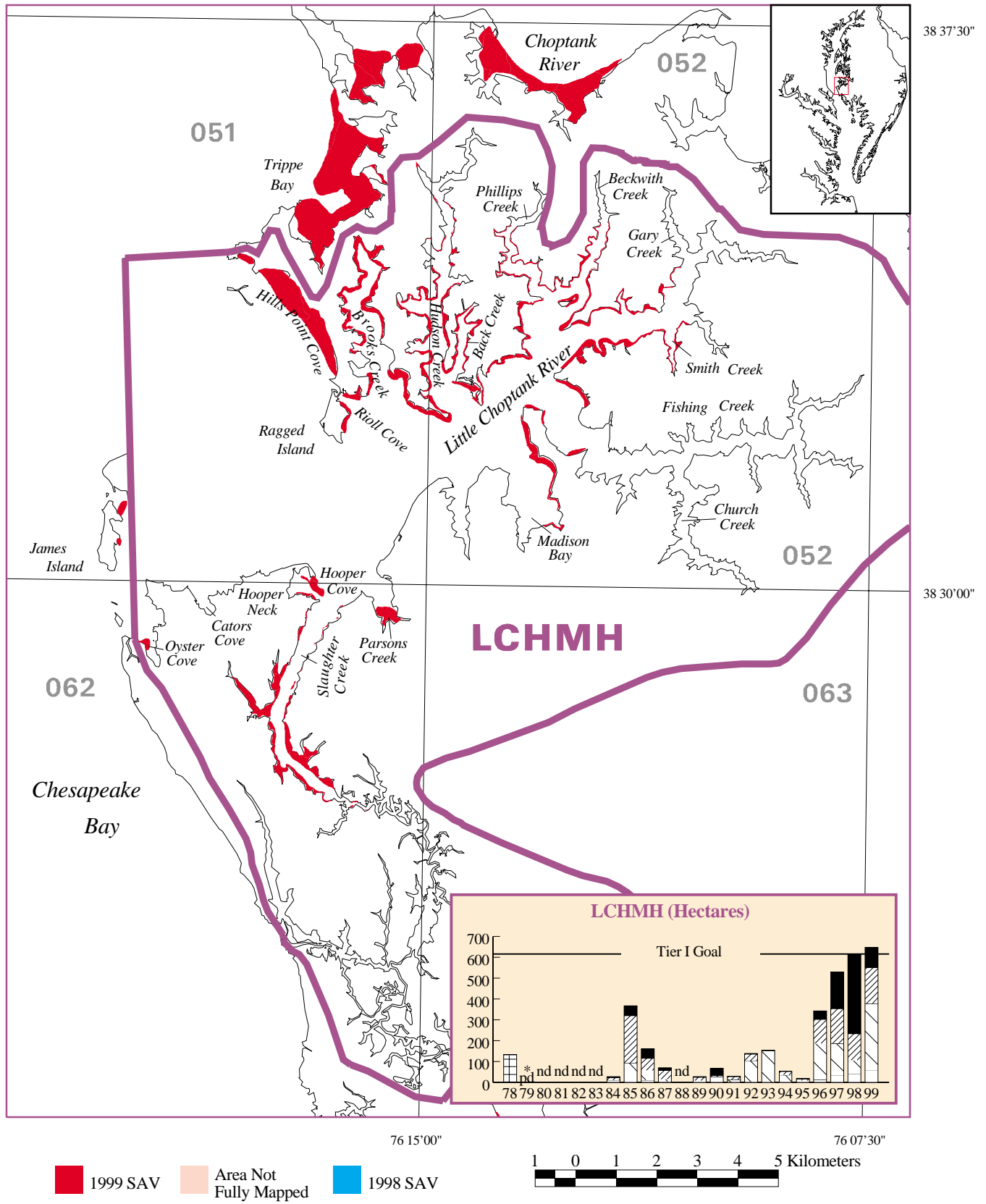
SAV distribution in the Mouth of the Choptank River (CHOMH1), the Lower (CHOMH2), the Middle (CHOOH), and the Upper (CHOTF) Choptank River in 1999. CHOOH and CHOTF are not graphed as no SAV was mapped from 1971-1999. (See Figure 11 for key.)



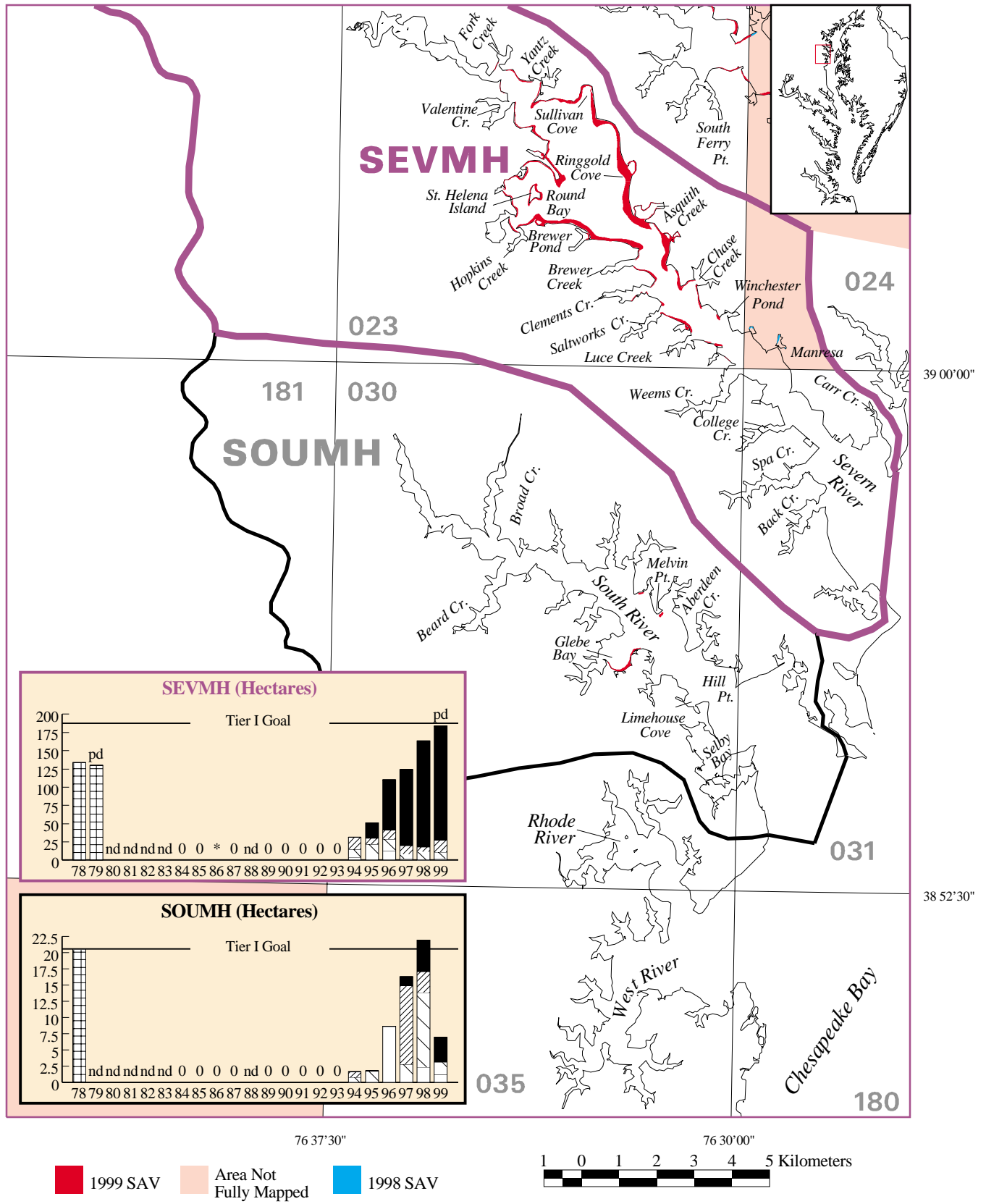
SAV distribution in the Mouth of the Choptank River (CHOMH1), the Lower (CHOMH2), the Middle (CHOOH), and the Upper (CHOTF) Choptank River in 1999. CHOOH and CHOTF are not graphed as no SAV was mapped from 1971-1999. (See Figure 11 for key.)



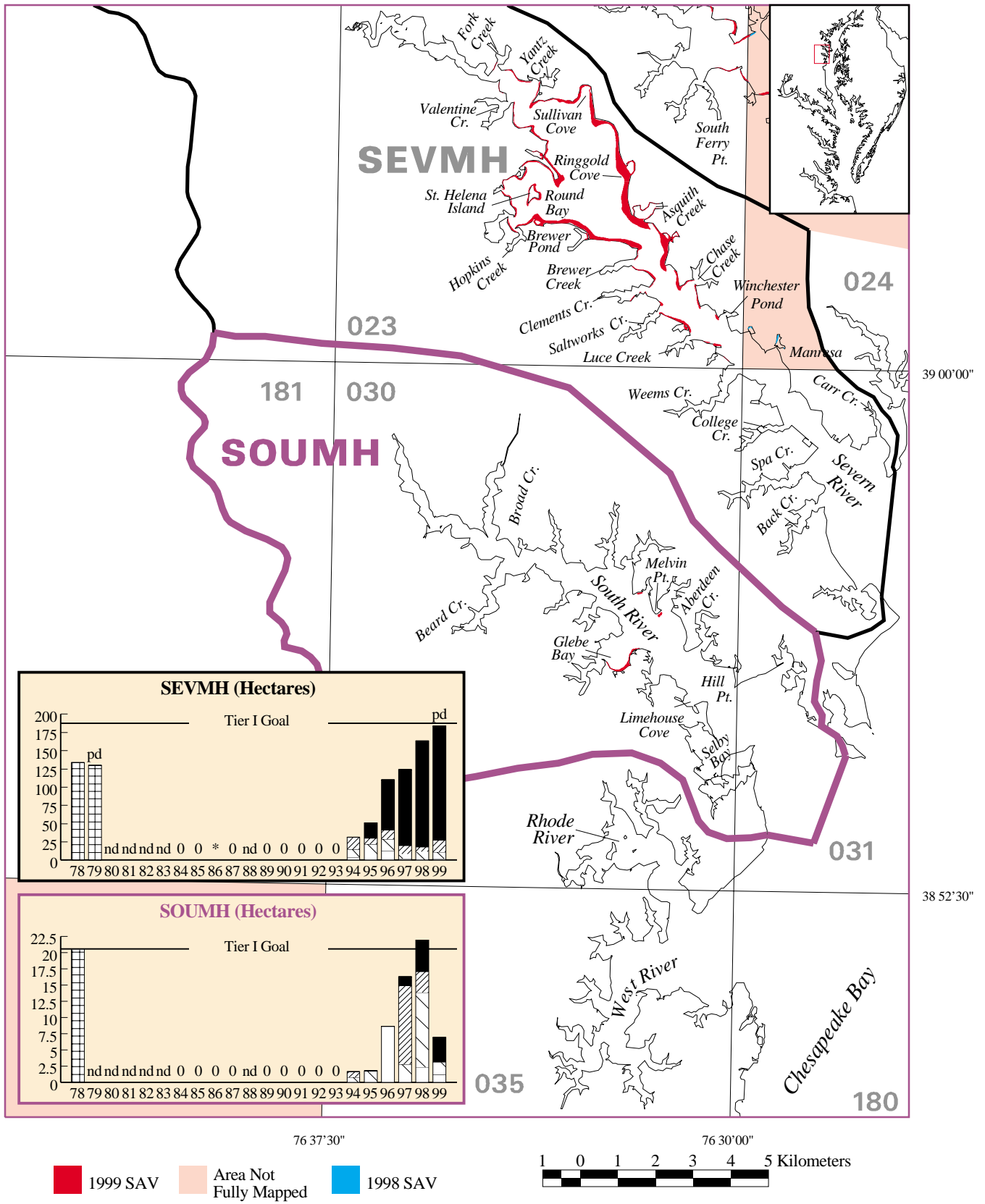
SAV distribution in the Mouth of the Choptank River (CHOMH1), the Lower (CHOMH2), the Middle (CHOOH), and the Upper (CHOTF) Choptank River in 1999. CHOOH and CHOTF are not graphed as no SAV was mapped from 1971-1999. (See Figure 11 for key.)



SAV distribution in the Little Choptank River (LCHMH) in 1999. (See Figure 11 for key.)

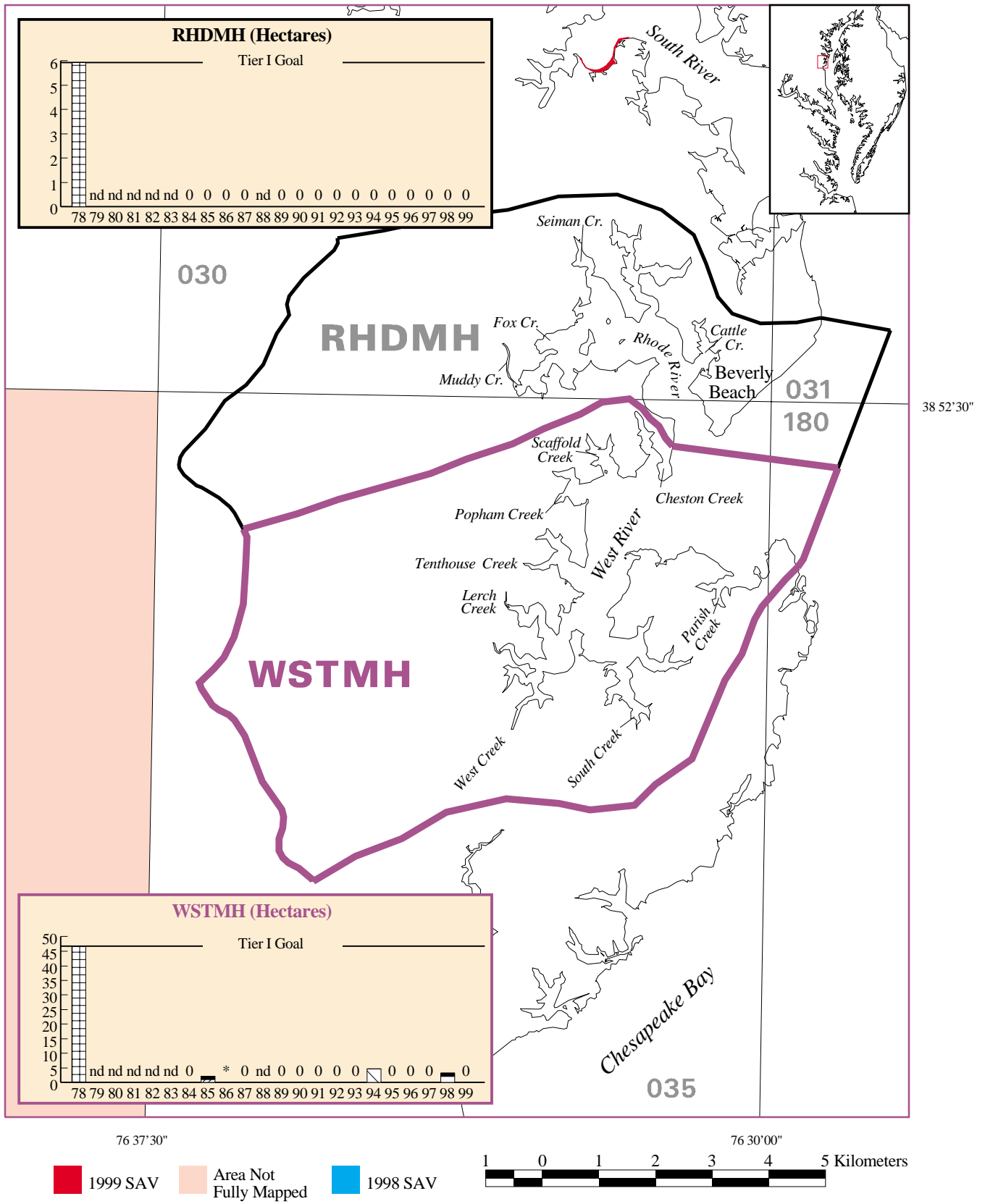


SAV distribution in the Severn (SEVMH) and South (SOUTH) Rivers in 1999. (See Figure 11 for key.)

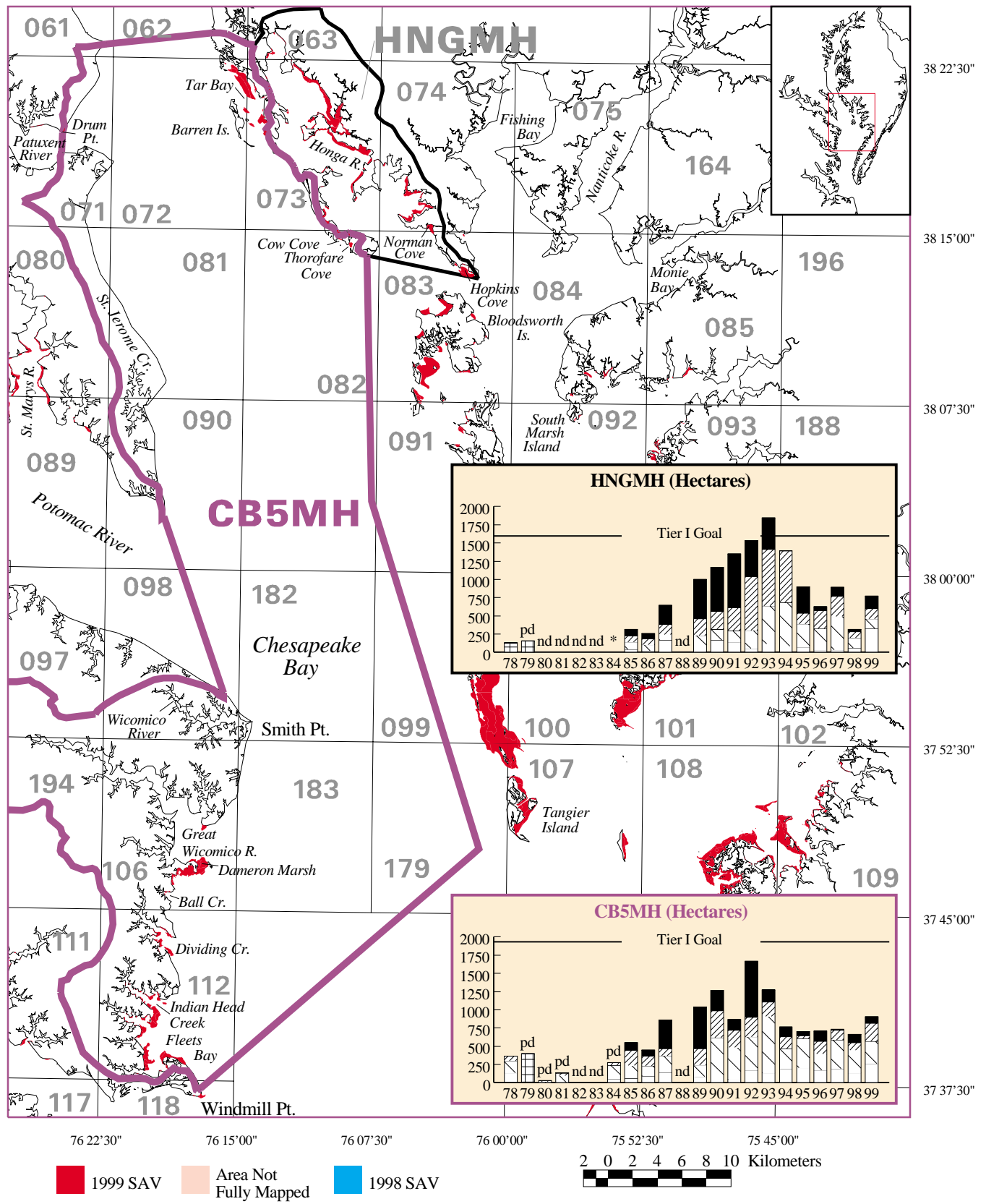


SAV distribution in the Severn (SEVMH) and South (SOUHM) Rivers in 1999. (See Figure 11 for key.)

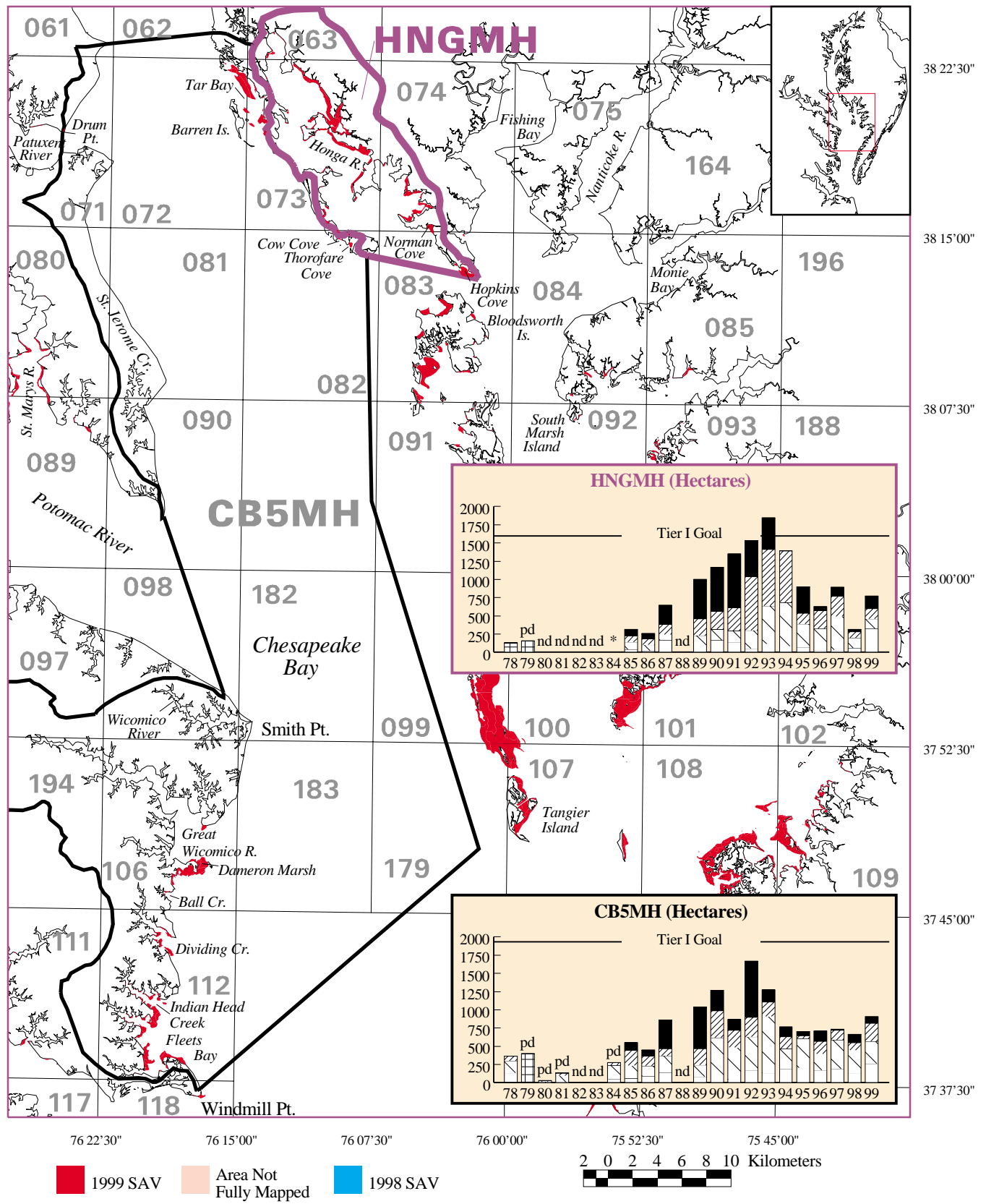




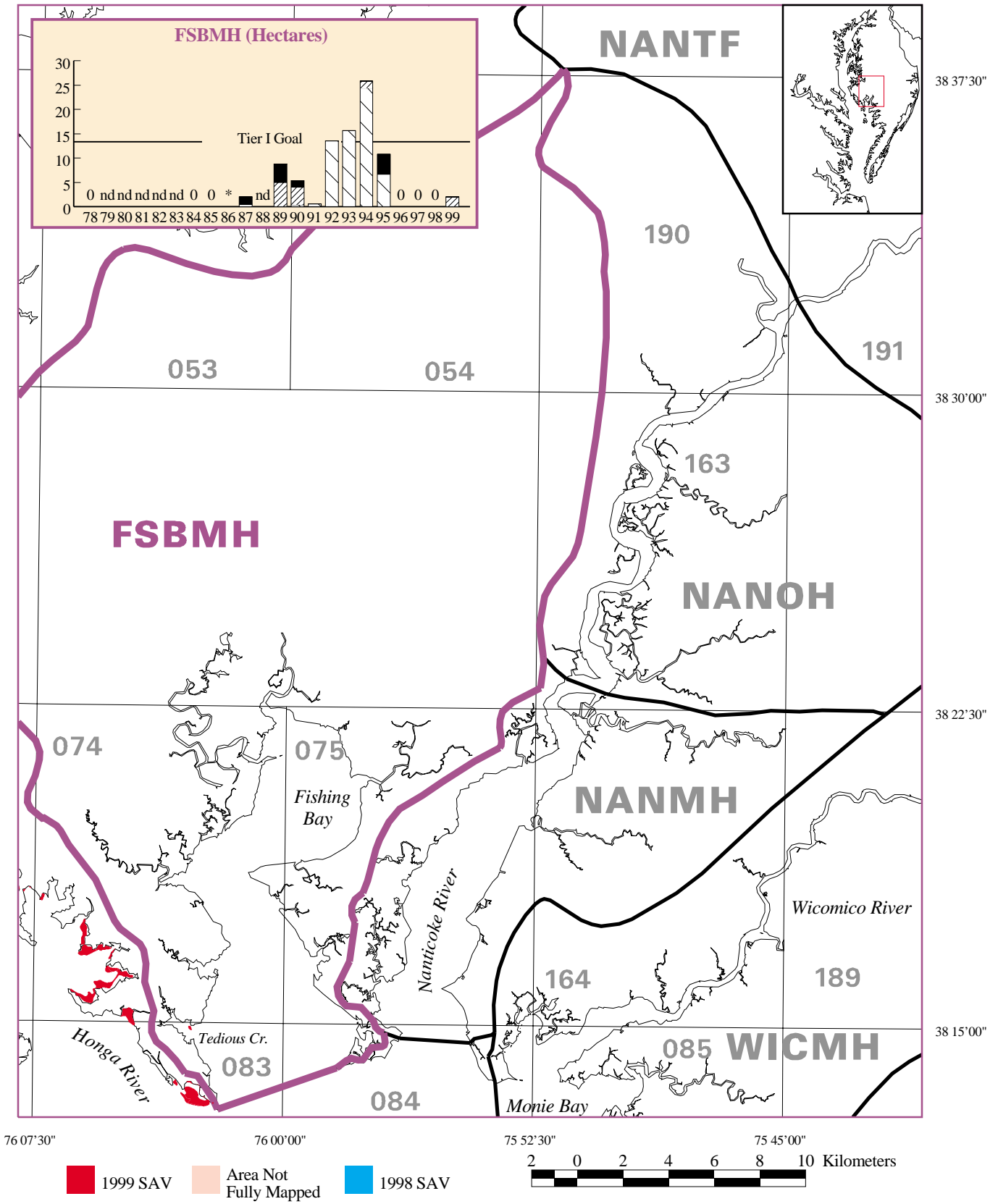
SAV distribution in the Rhode (RHD MH) and West (WSTMH) Rivers in 1999. (See Figure 11 for key.)



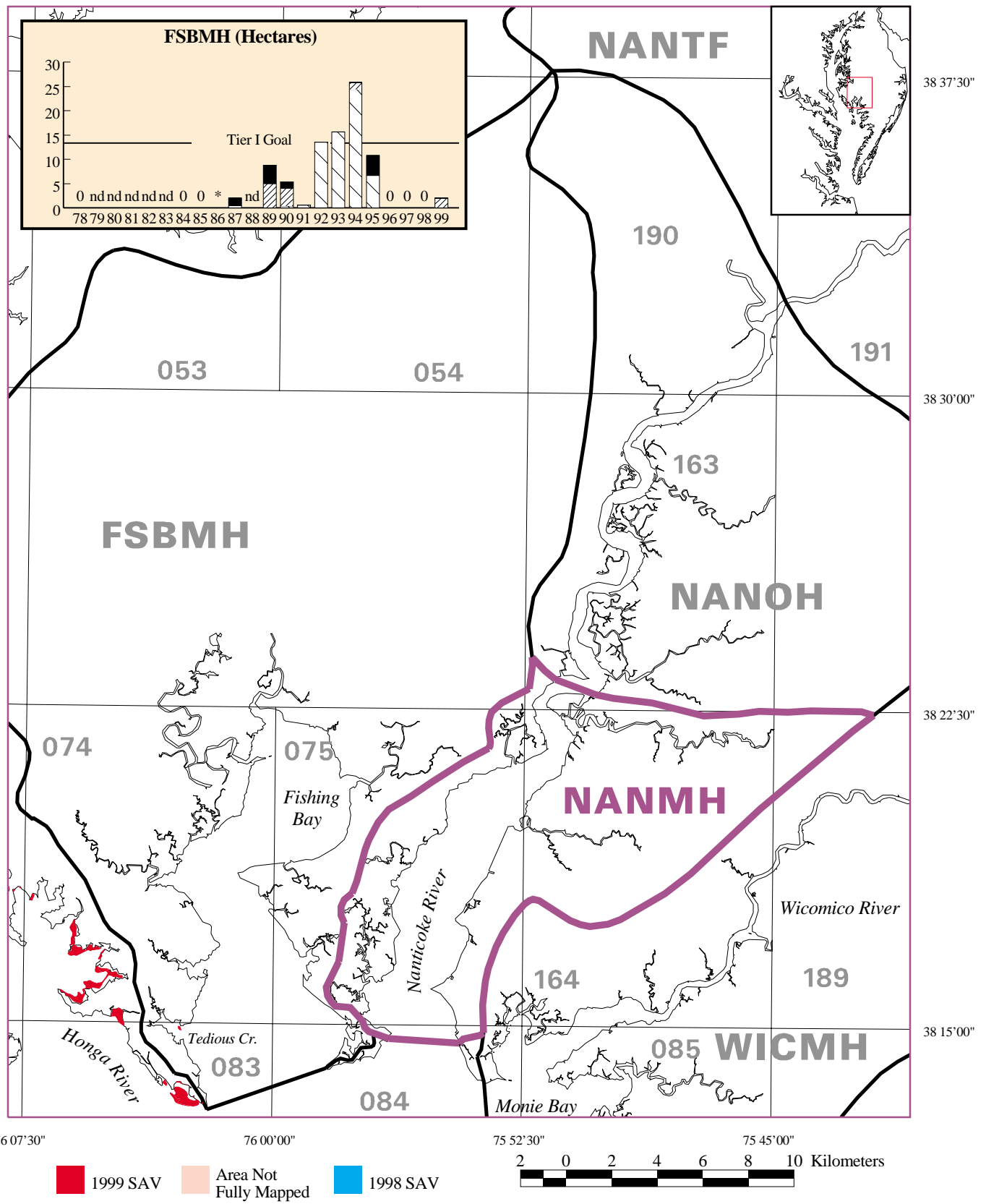
SAV distribution in the Lower Central Chesapeake Bay (CB5MH) and the Honga River (HNGMH) in 1999. (See Figure 11 for key.)



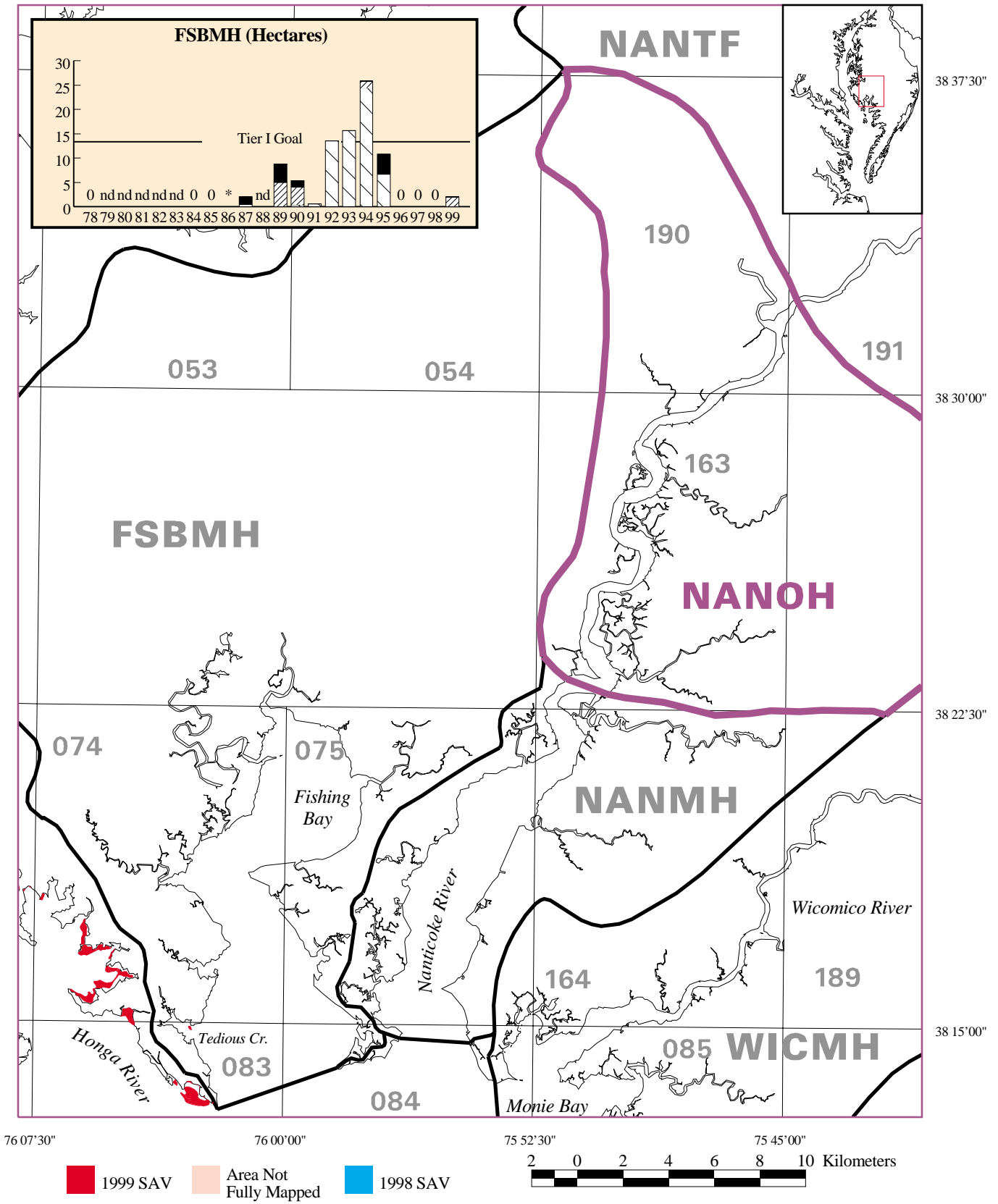
SAV distribution in the Lower Central Chesapeake Bay (CB5MH) and the Honga River (HNGMH) in 1999. (See Figure 11 for key.)



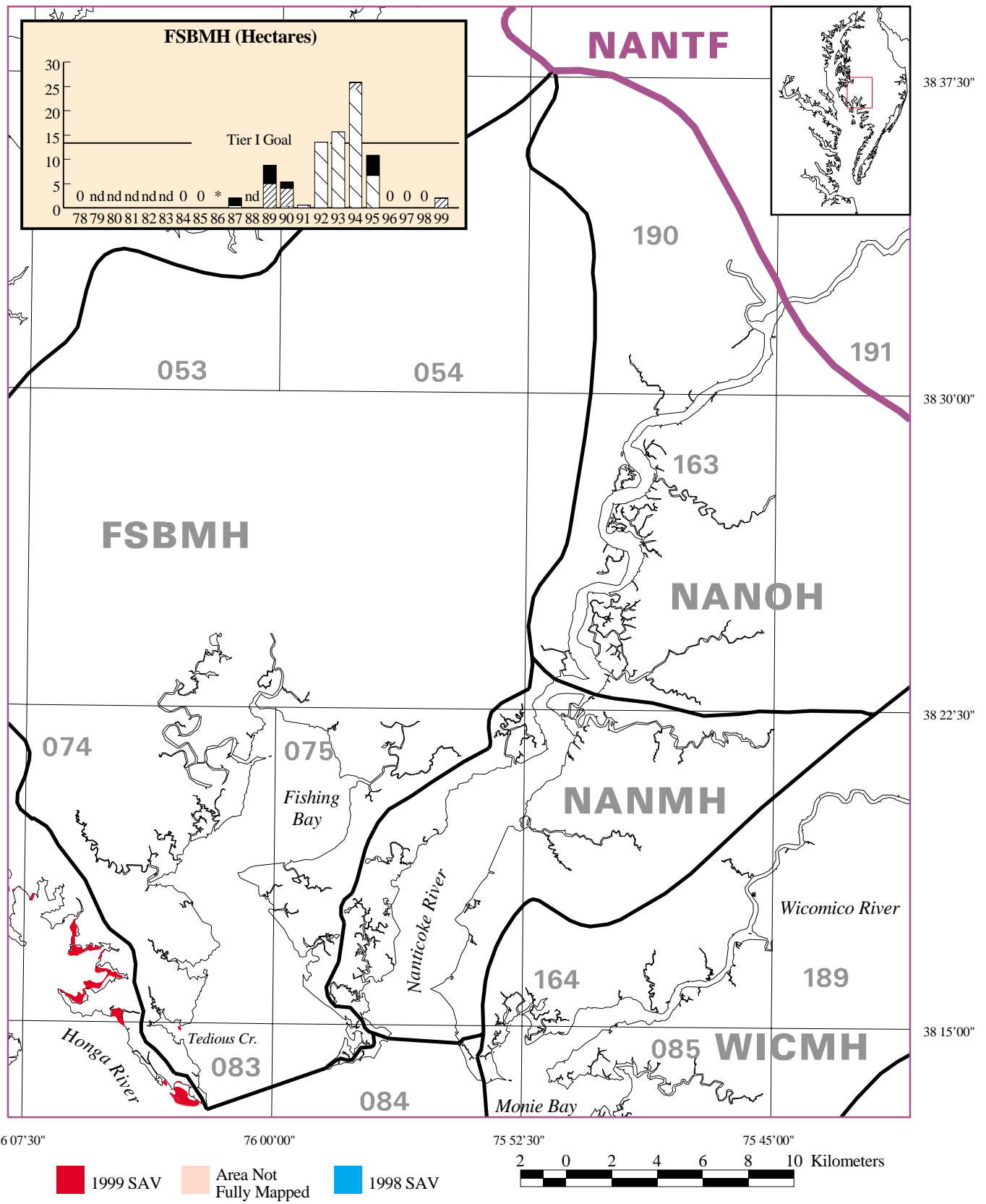
SAV distribution in Fishing Bay (FSBMH); the Lower (NANMH), Middle (NANOH), and Upper (NANTF) Nanticoke River; and the Wicomico River (WICMH) in 1999. NANMH, NANOH, NANTF, and WICMH are not graphed as no SAV was mapped from 1971-1999. (See Figure 11 for key.)



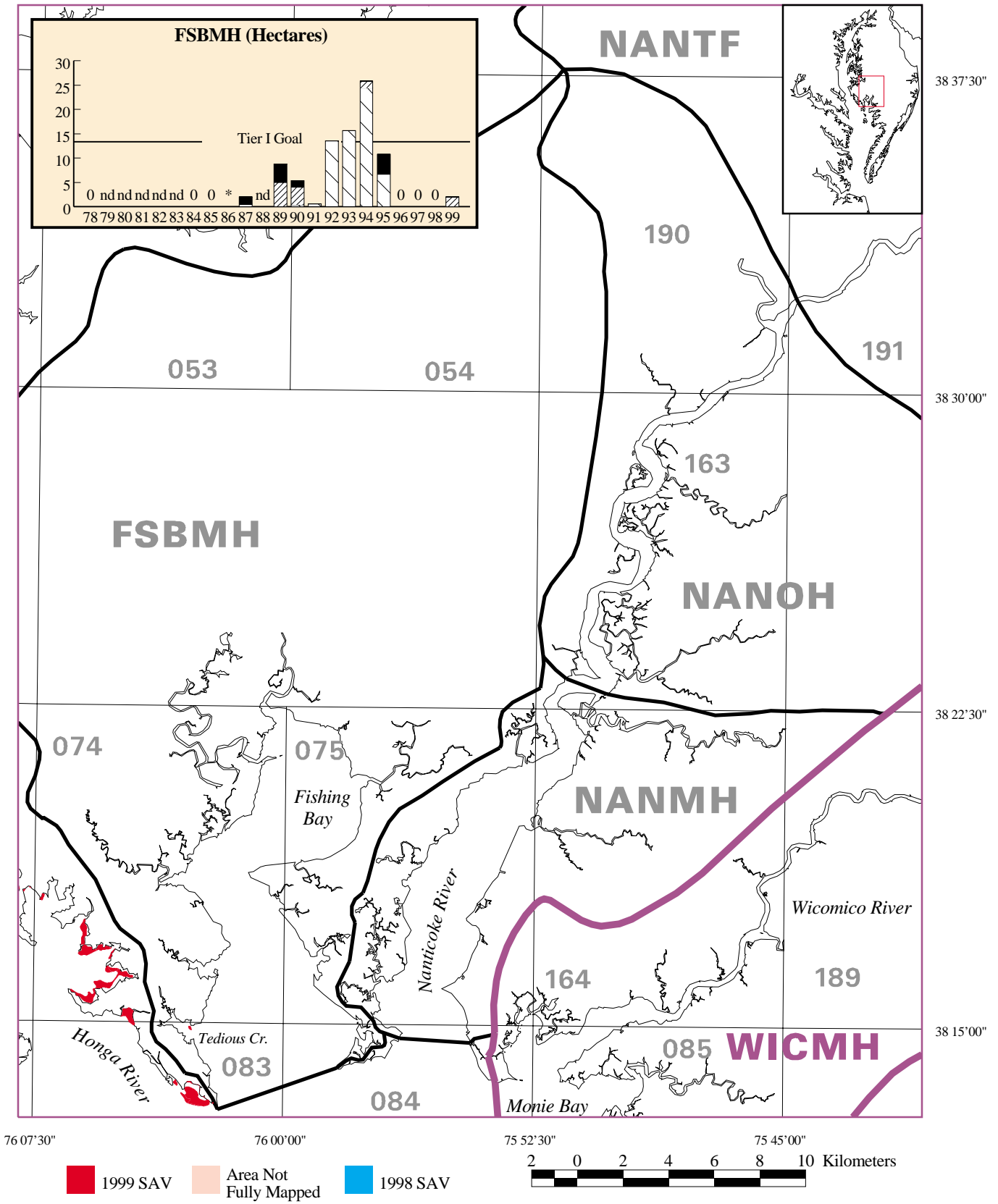
SAV distribution in Fishing Bay (FSBMH); the Lower (NANMH), Middle (NANOH), and Upper (NANTF) Nanticoke River; and the Wicomico River (WICMH) in 1999. NANMH, NANOH, NANTF, and WICMH are not graphed as no SAV was mapped from 1971-1999. (See Figure 11 for key.)



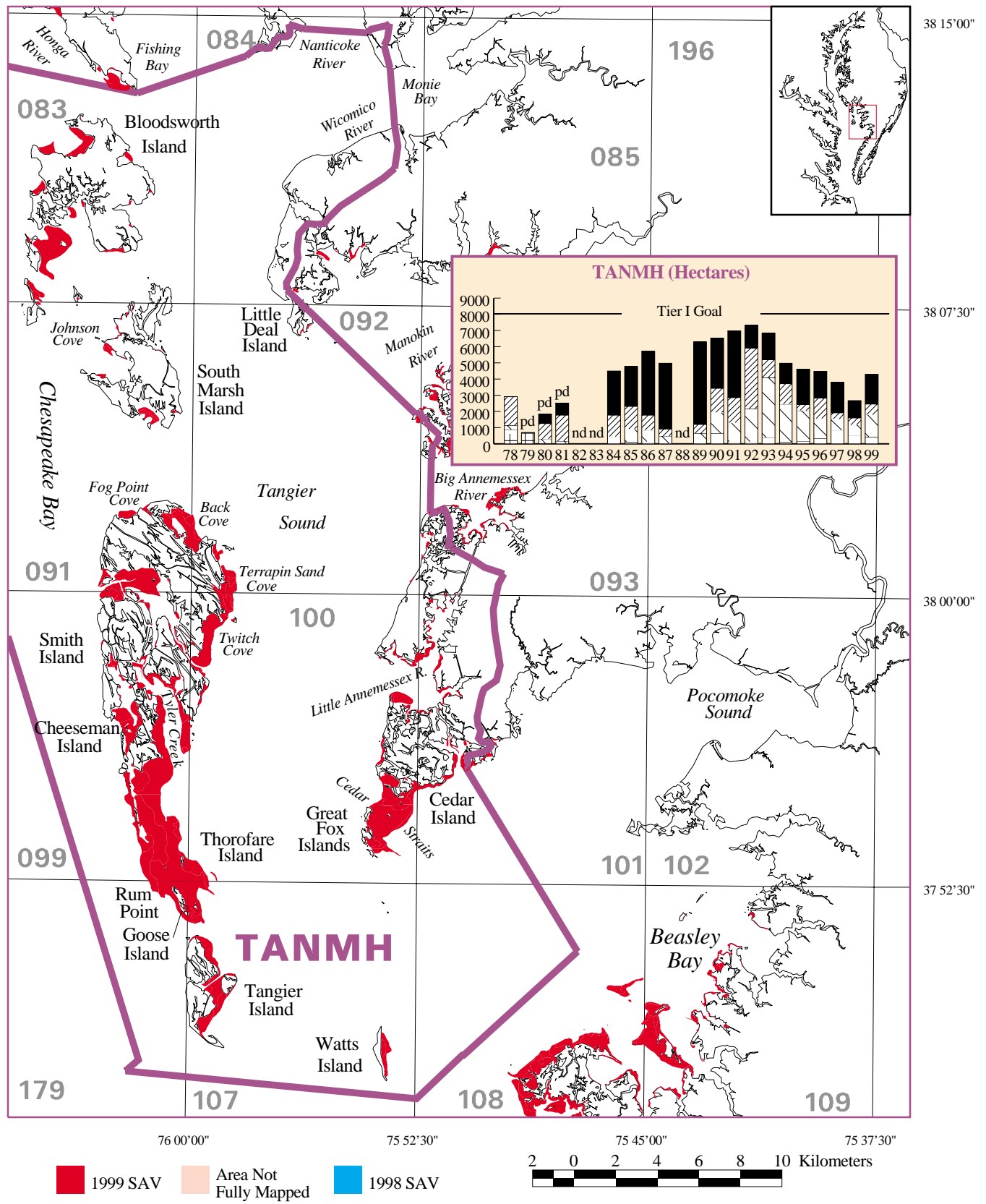
SAV distribution in Fishing Bay (FSBMH); the Lower (NANMH), Middle (NANOH), and Upper (NANTF) Nanticoke River; and the Wicomico River (WICMH) in 1999. NANMH, NANOH, NANTF, and WICMH are not graphed as no SAV was mapped from 1971-1999. (See Figure 11 for key.)



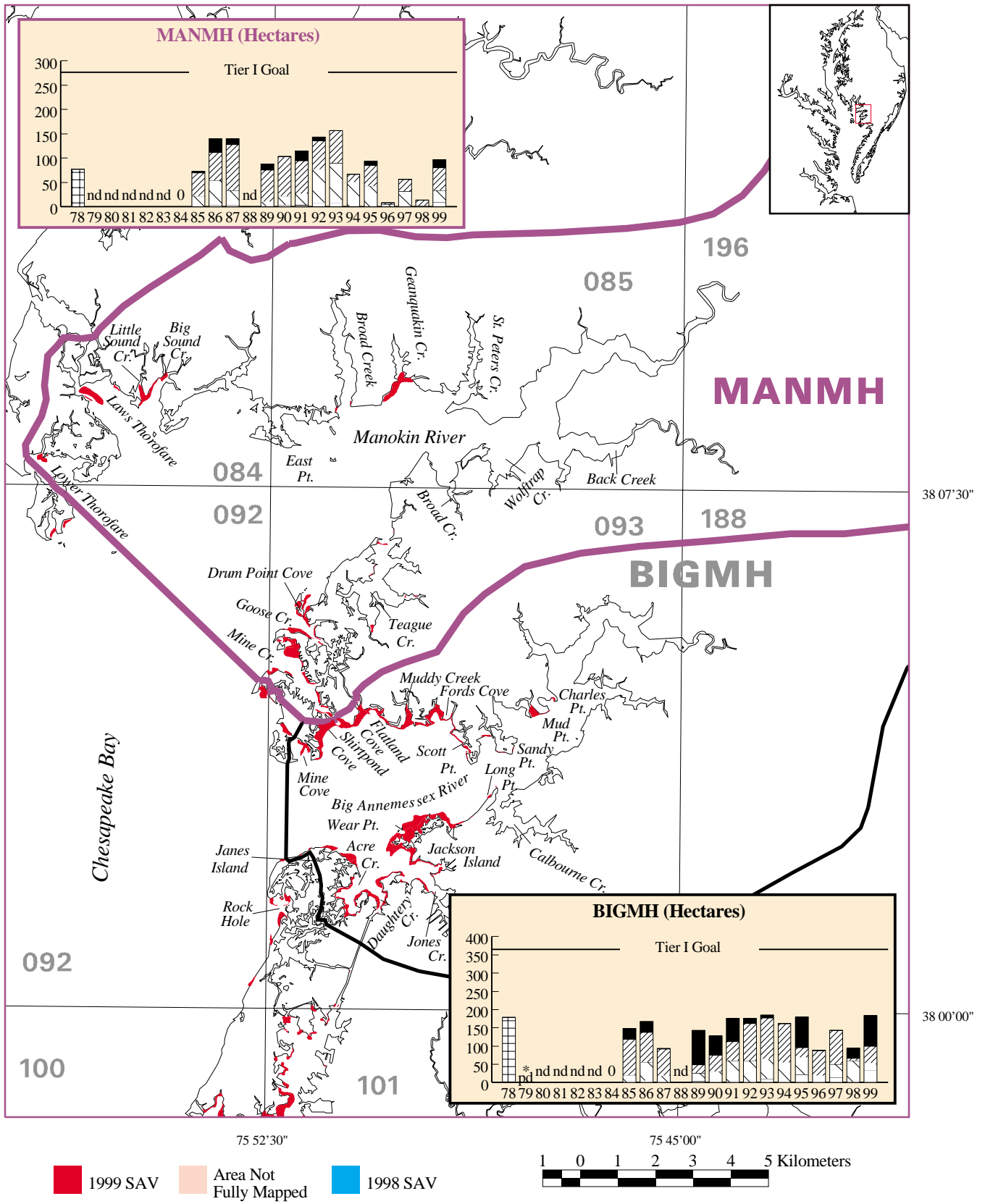
SAV distribution in Fishing Bay (FSBMH); the Lower (NANMH), Middle (NANOH), and Upper (NANTF) Nanticoke River; and the Wicomico River (WICMH) in 1999. NANMH, NANOH, NANTF, and WICMH are not graphed as no SAV was mapped from 1971-1999. (See Figure 11 for key.)



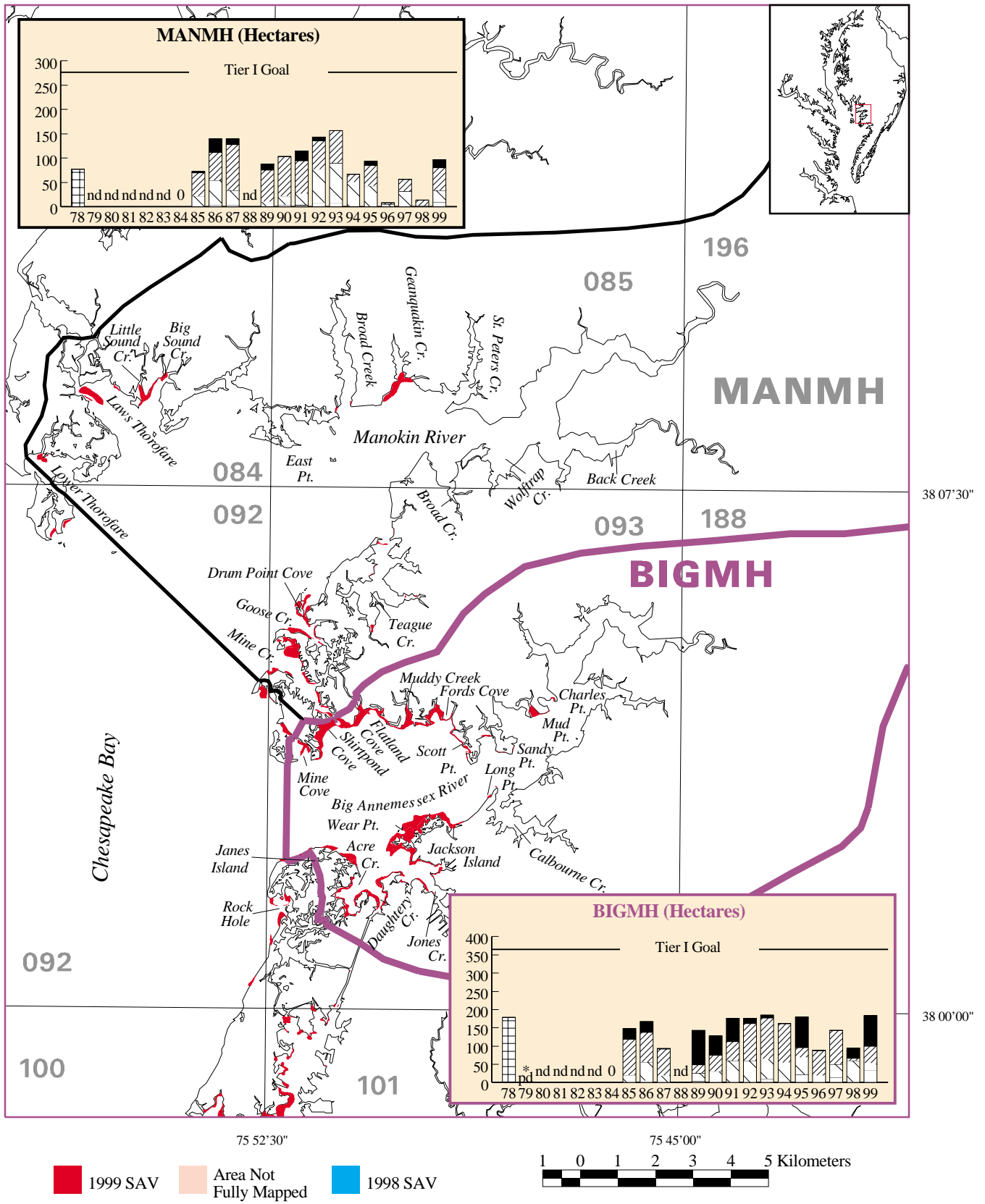
SAV distribution in Fishing Bay (FSBMH); the Lower (NANMH), Middle (NANOH), and Upper (NANTF) Nanticoke River; and the Wicomico River (WICMH) in 1999. NANMH, NANOH, NANTF, and WICMH are not graphed as no SAV was mapped from 1971-1999. (See Figure 11 for key.)



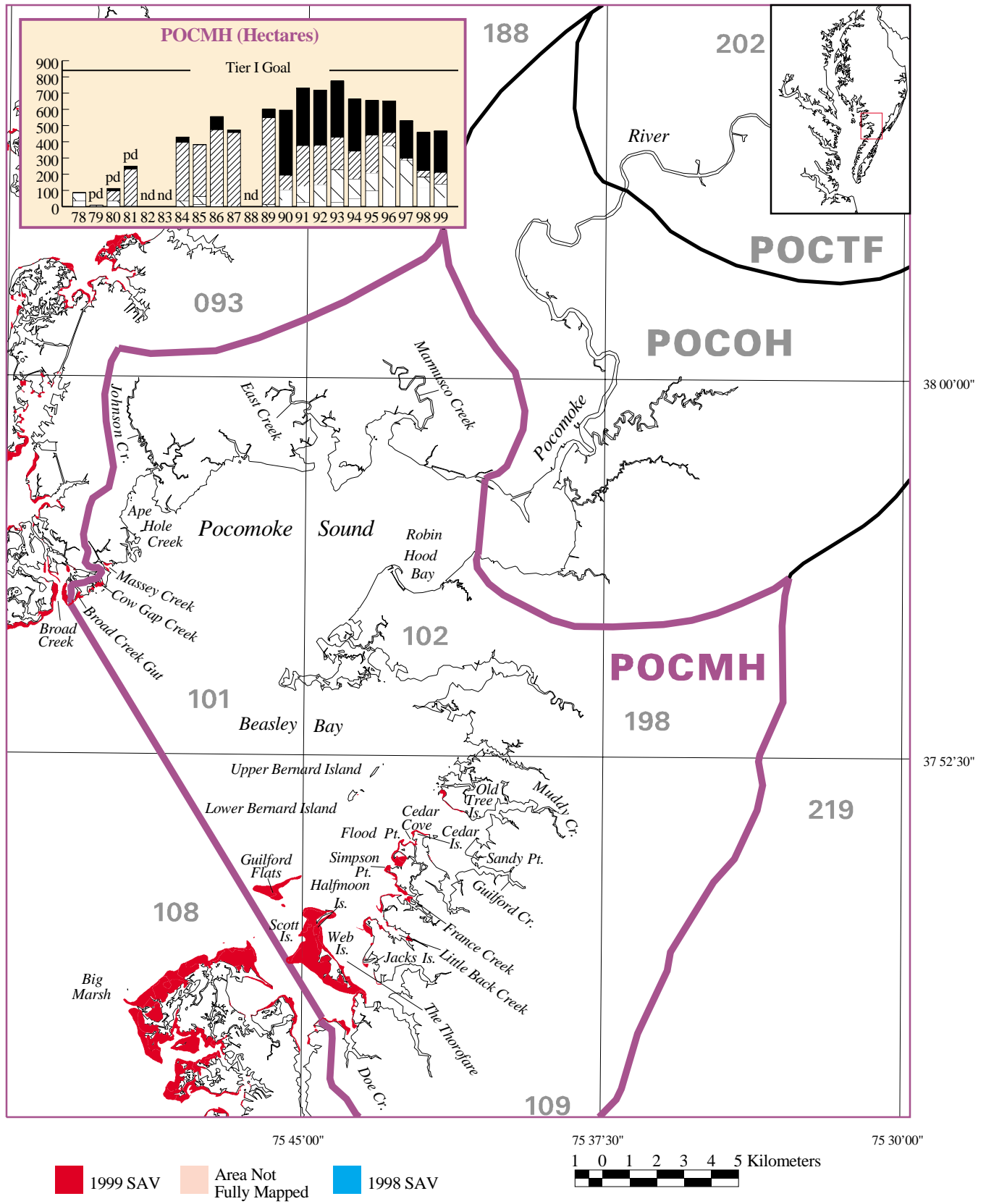
SAV distribution in Tangier Sound (TANMH) in 1999. (See Figure 11 for key.)



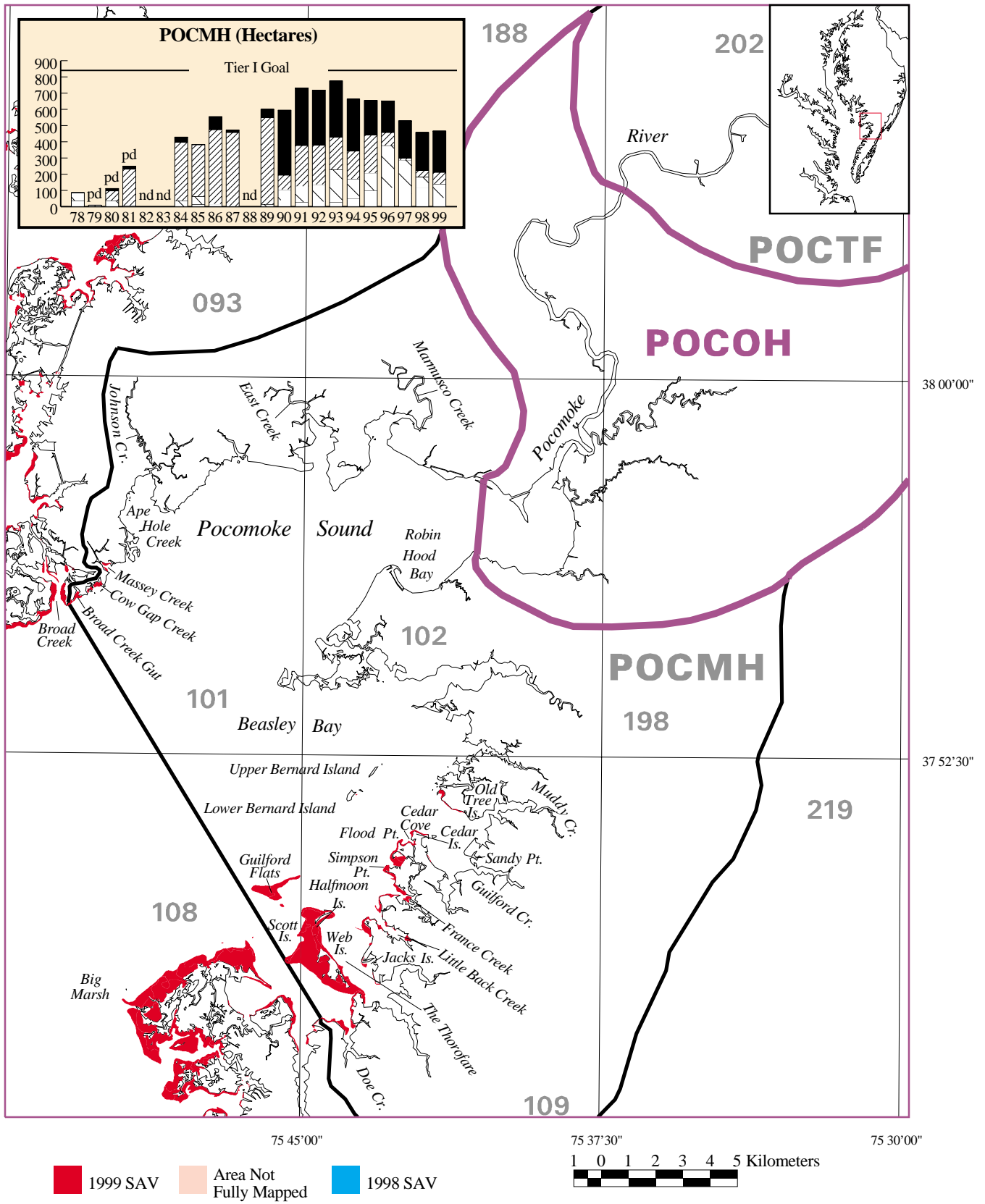
SAV distribution in the Manokin (MANMH) and the Big Annesmessex (BIGMH) Rivers in 1999. (See Figure 11 for key.)



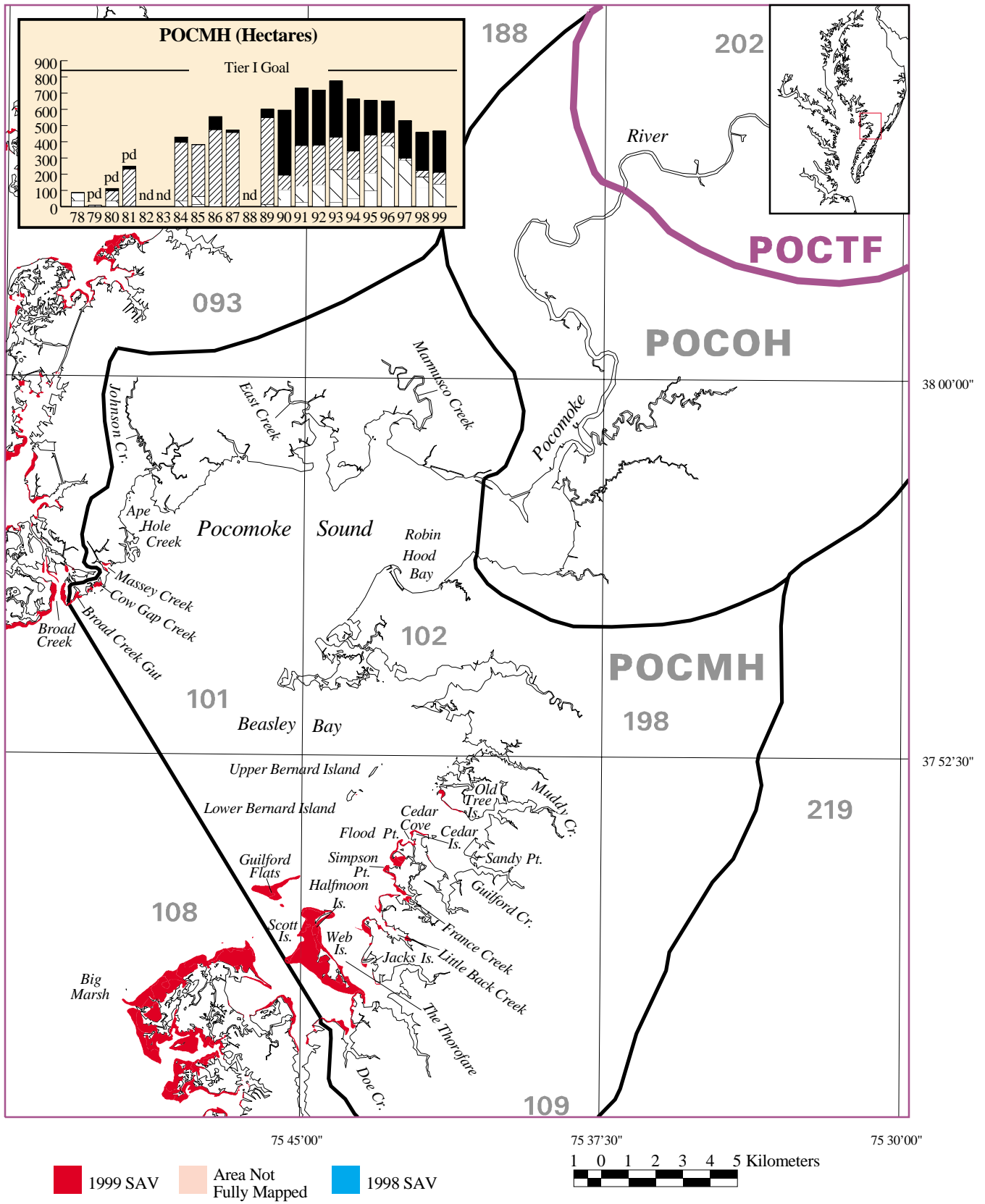
SAV distribution in the Manokin (MANMH) and the Big Annesmessex (BIGMH) Rivers in 1999. (See Figure 11 for key.)



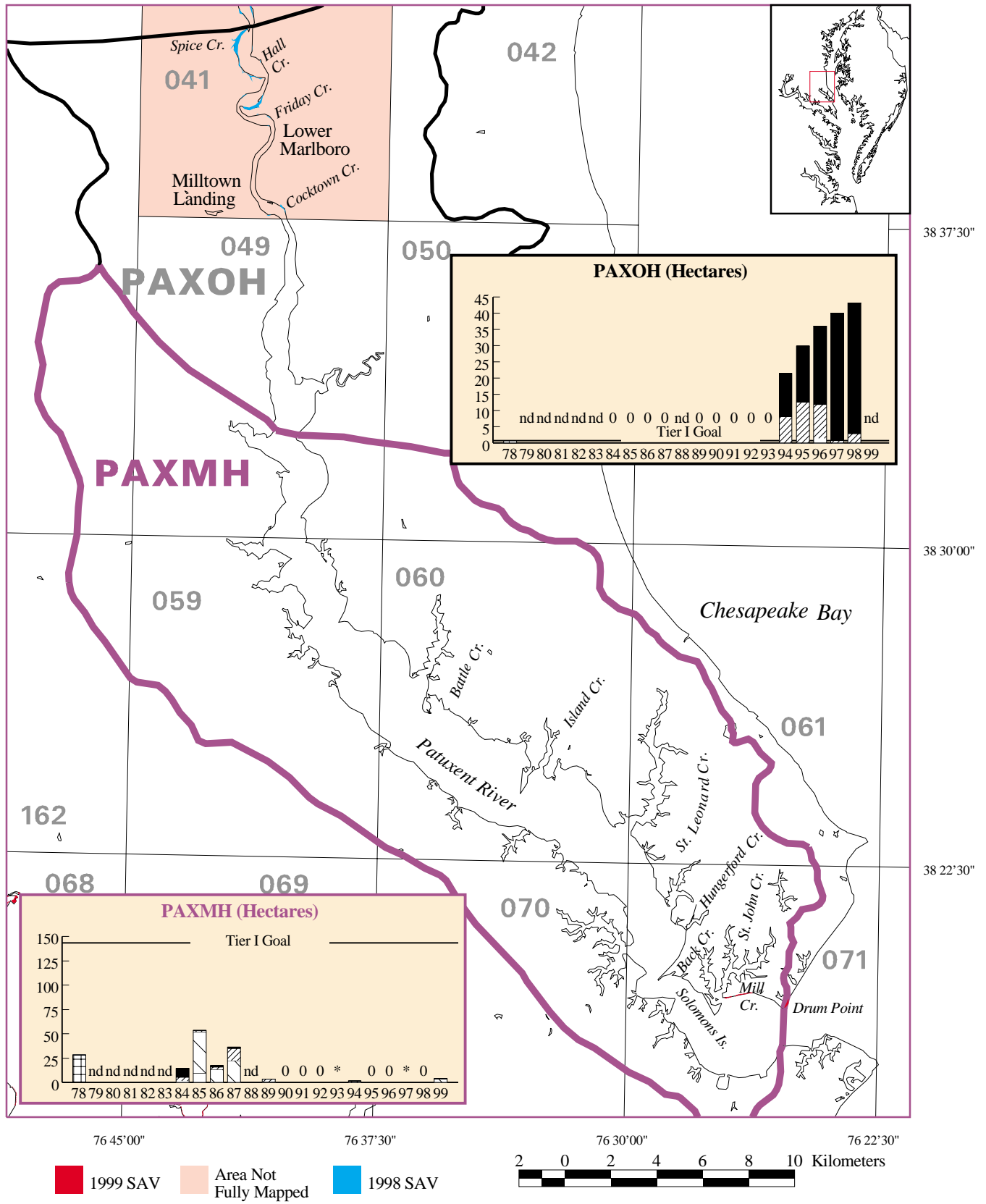
SAV distribution in the Lower (POCMH), Middle (POCOH), and Upper (POCTF) Pocomoke River in 1999. POCOH and POCTF are not graphed as no SAV was mapped from 1971-1999. (See Figure 11 for key.)



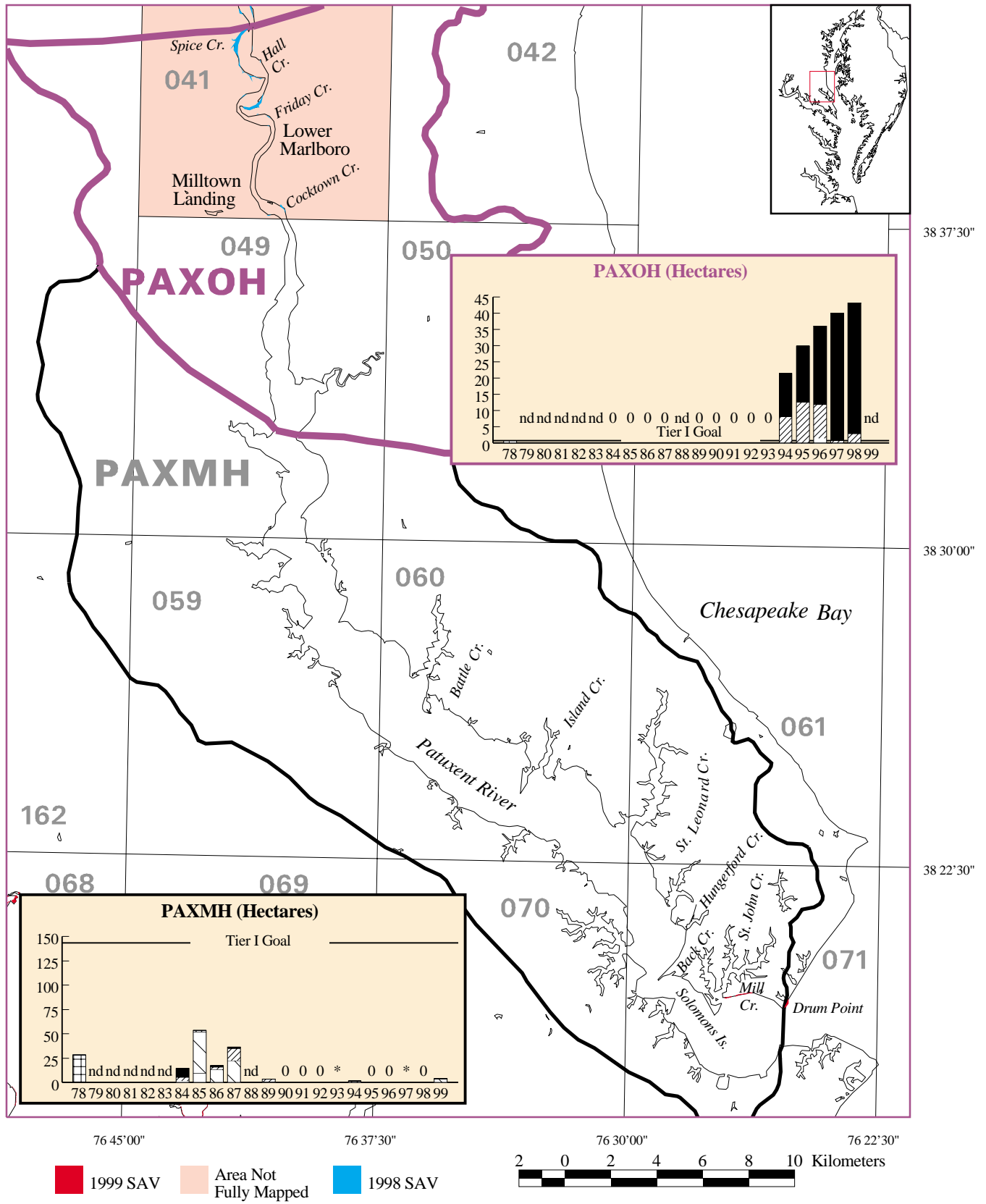
SAV distribution in the Lower (POCMH), Middle (POCOH), and Upper (POCTF) Pocomoke River in 1999. POCOH and POCTF are not graphed as no SAV was mapped from 1971-1999. (See Figure 11 for key.)



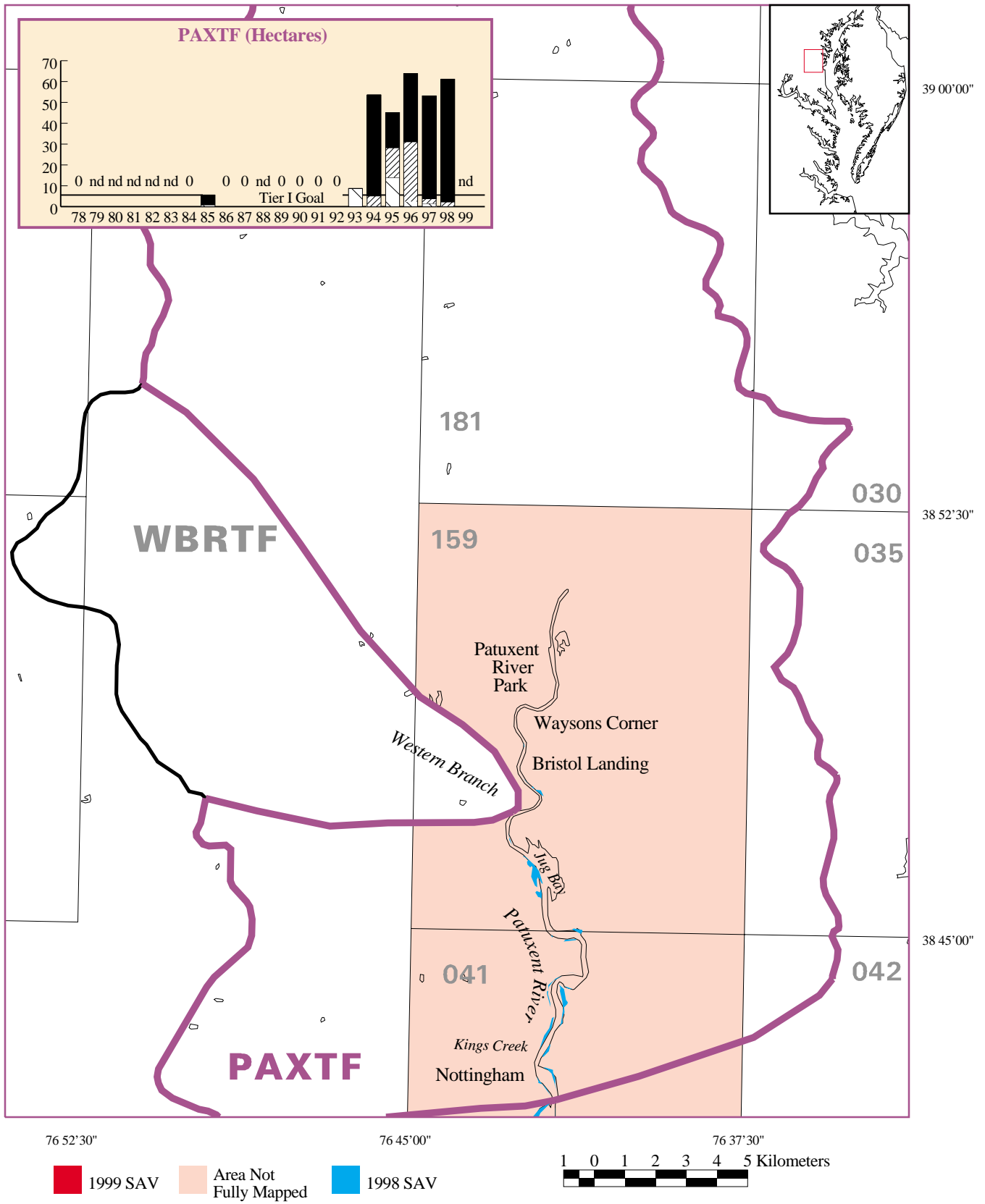
SAV distribution in the Lower (POCMH), Middle (POCOH), and Upper (POCTF) Pocomoke River in 1999. POCOH and POCTF are not graphed as no SAV was mapped from 1971-1999. (See Figure 11 for key.)



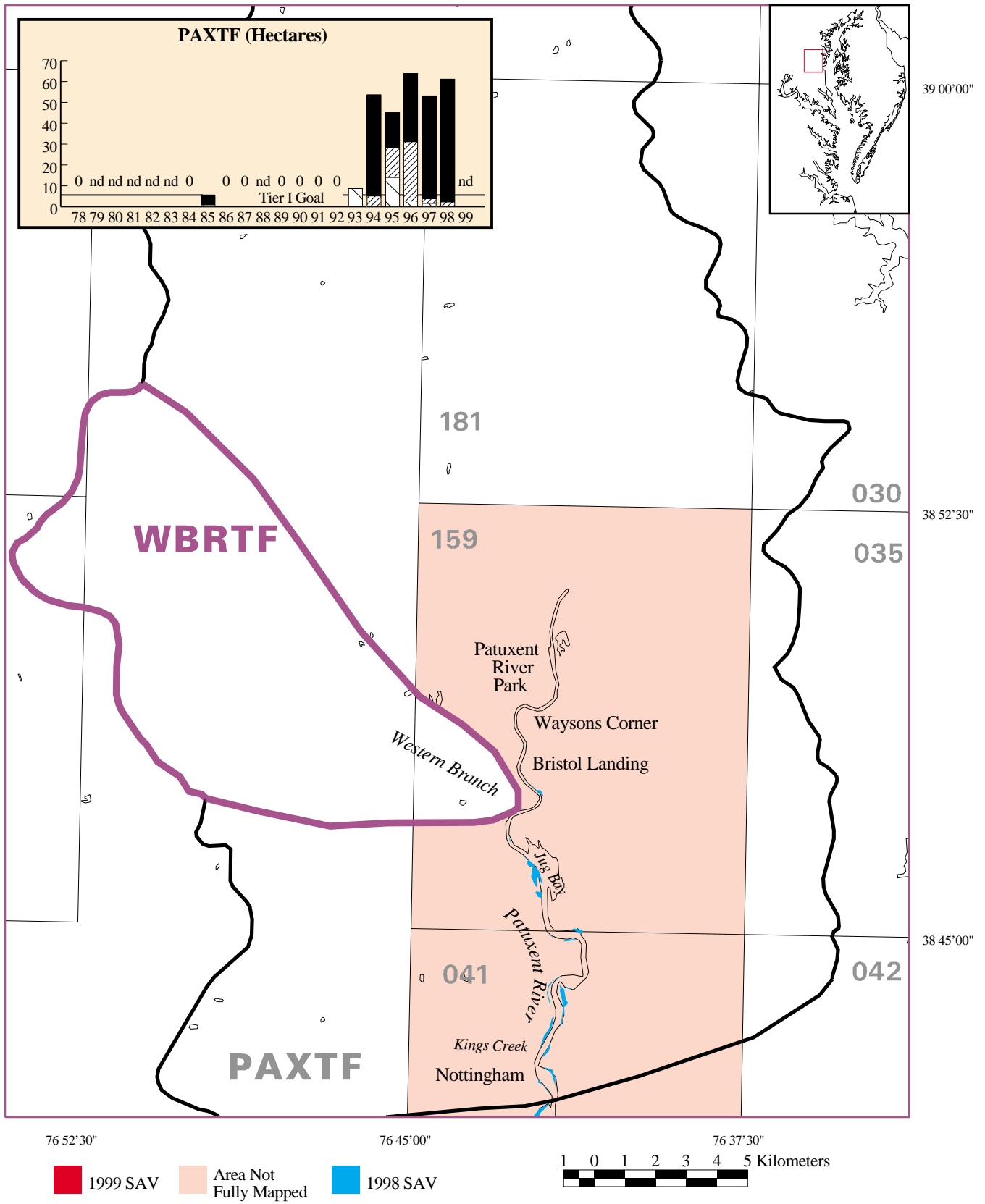
SAV distribution in the Lower (PAXMH) and Middle (PAXOH) Patuxent River in 1999. (See Figure 11 for key.)



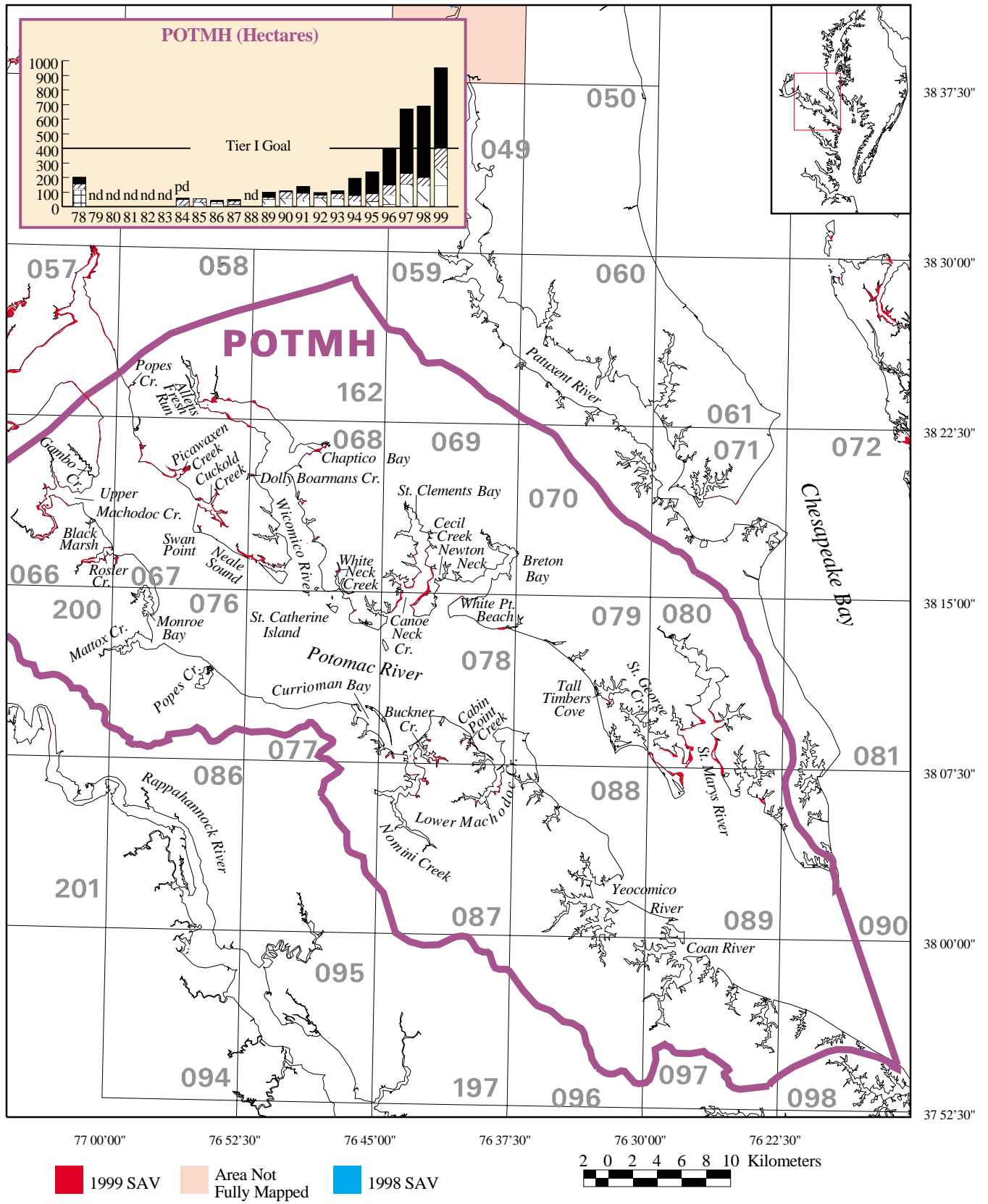
SAV distribution in the Lower (PAXMH) and Middle (PAXOH) Patuxent River in 1999. (See Figure 11 for key.)



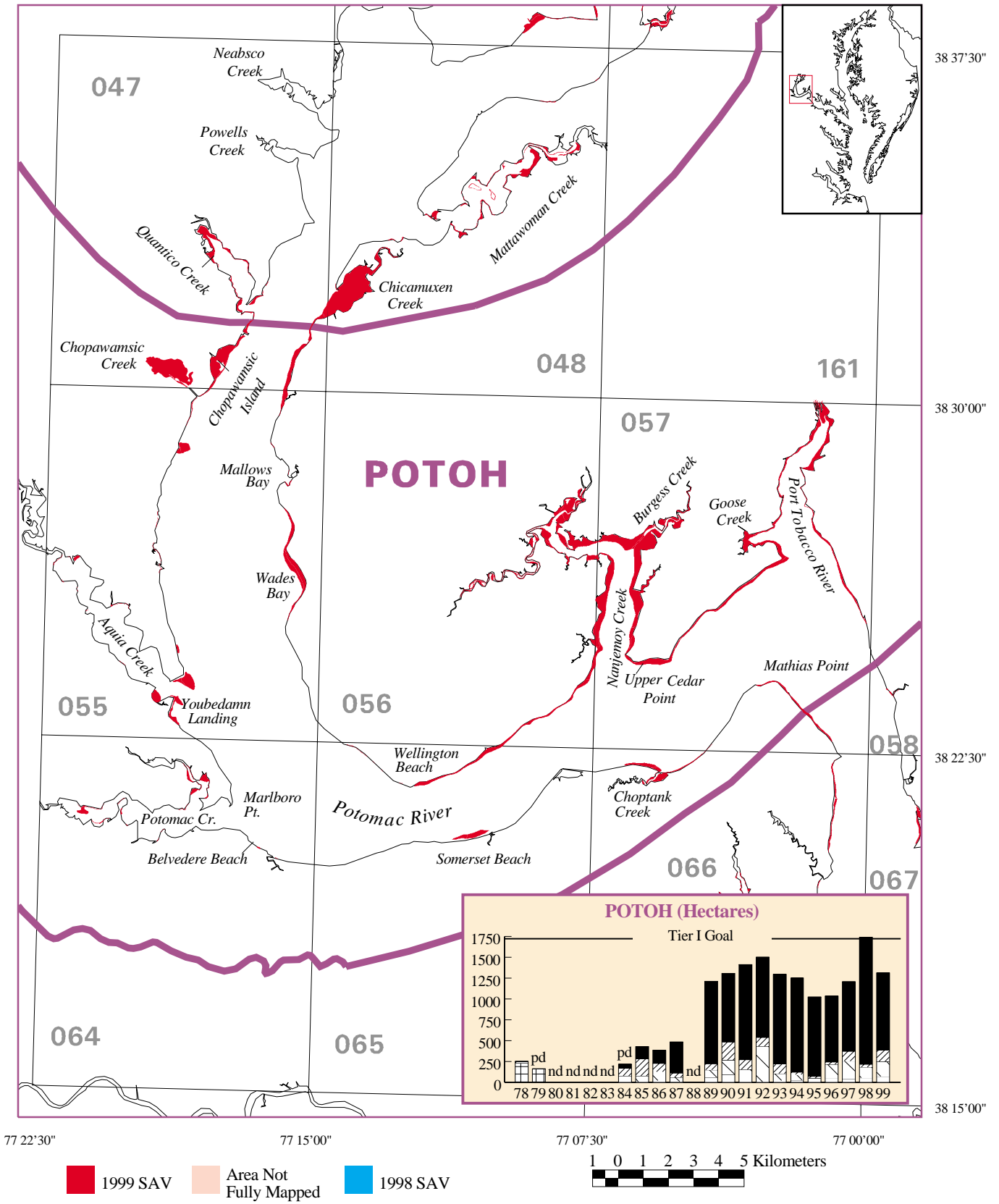
SAV distribution in the Upper Patuxent River (PAXTF), and the Western Branch of the Patuxent River (WBRTF) in 1999. WBRTF is not graphed as no SAV was mapped from 1971-1999. (See Figure 11 for key.)



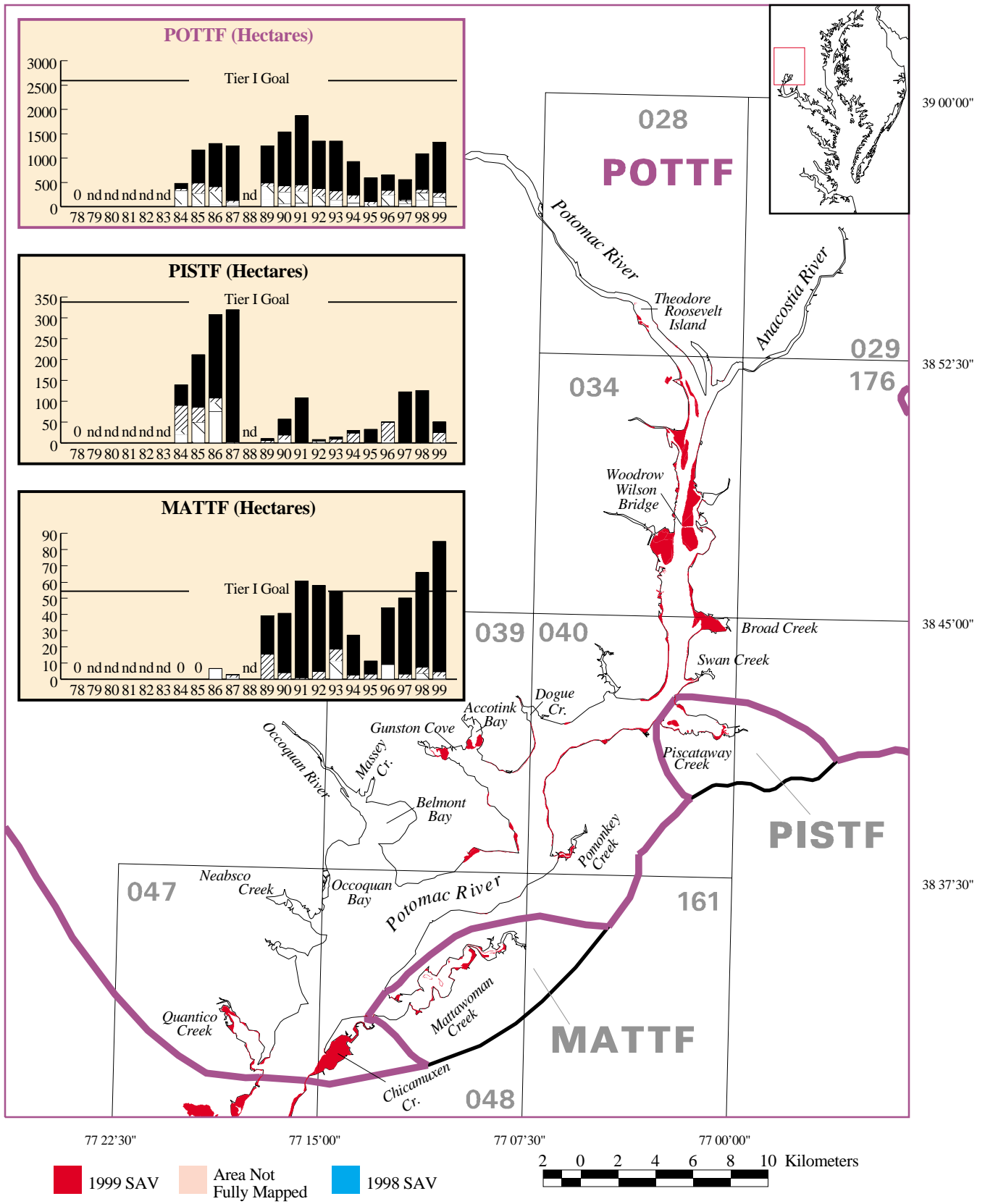
SAV distribution in the Upper Patuxent River (PAXTF), and the Western Branch of the Patuxent River (WBRTF) in 1999. WBRTF is not graphed as no SAV was mapped from 1971-1999. (See Figure 11 for key.)



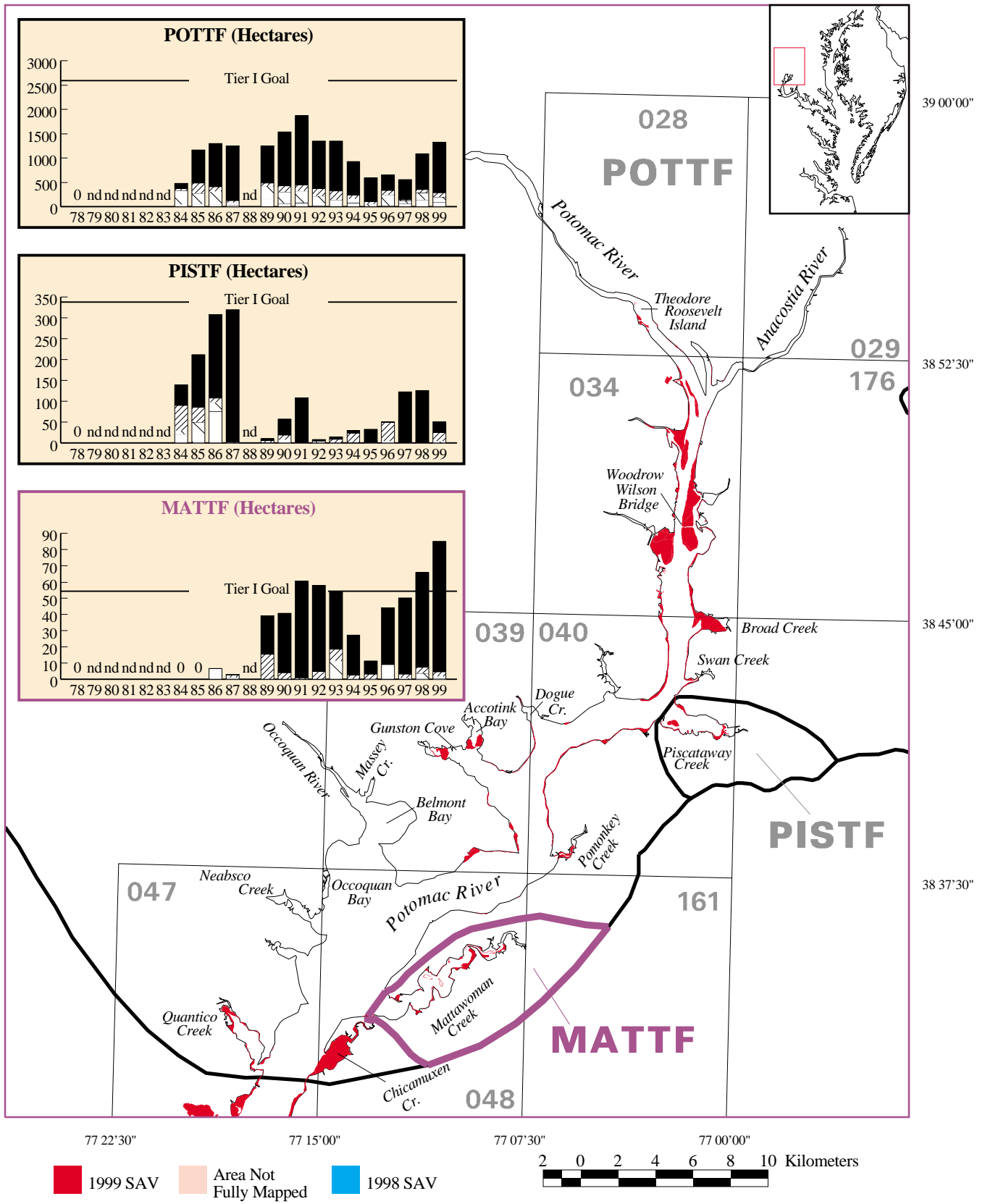
SAV distribution in the Lower Potomac River (POTMH) in 1999. (See Figure 11 for key.)



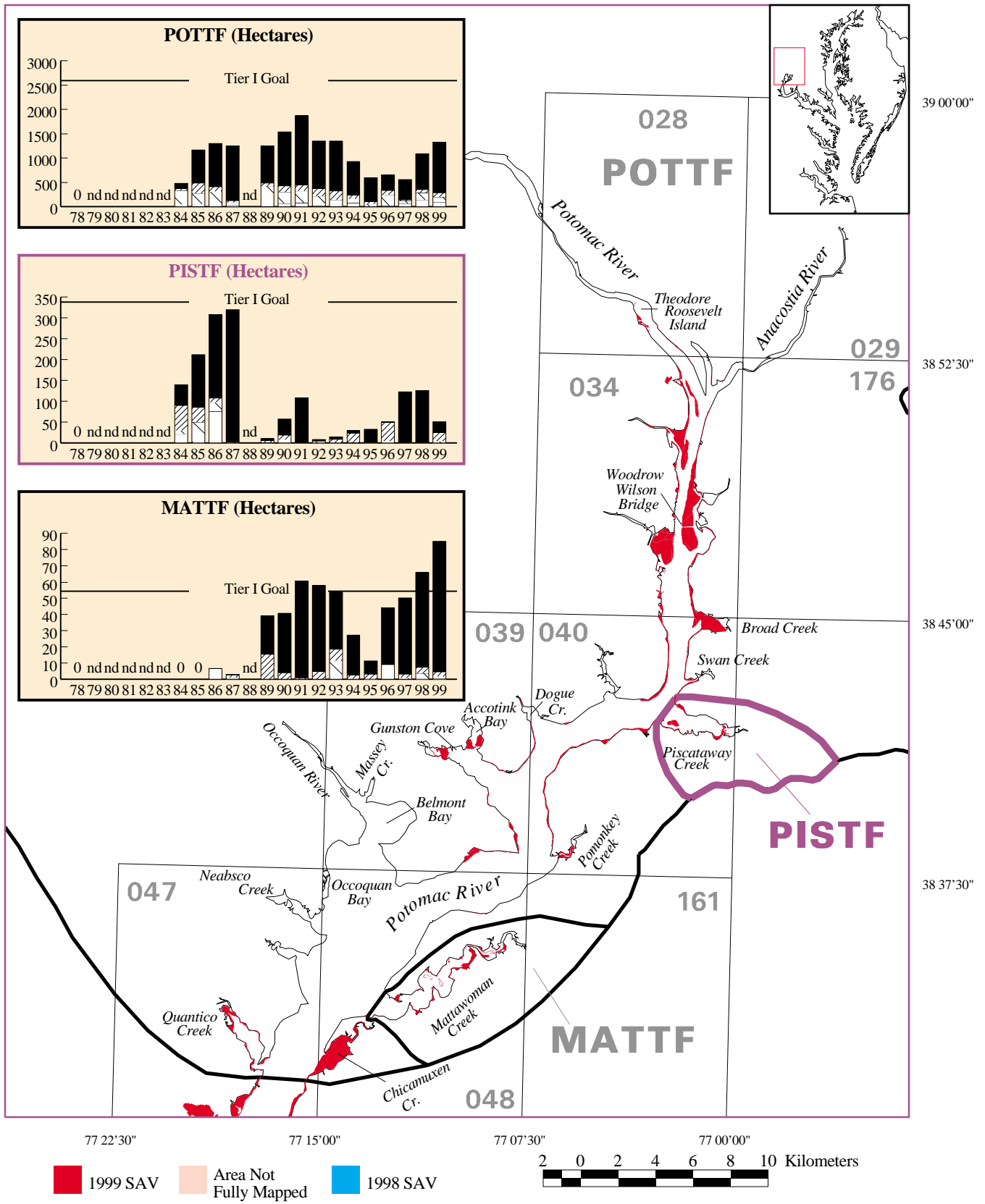
SAV distribution in the Middle Potomac River (POTOH) in 1999. (See Figure 11 for key.)



SAV distribution in the Upper Potomac River (POTTF), Mattawoman Creek (MATTF), and Piscataway Creek (PISTF) in 1999. (See Figure 11 for key.)



SAV distribution in the Upper Potomac River (POTTF), Mattawoman Creek (MATTF), and Piscataway Creek (PISTF) in 1999. (See Figure 11 for key.)



SAV distribution in the Upper Potomac River (POTTF), Mattawoman Creek (MATTF), and Piscataway Creek (PISTF) in 1999. (See Figure 11 for key.)